

# Phospho EEF2K (Ser366) Antibody

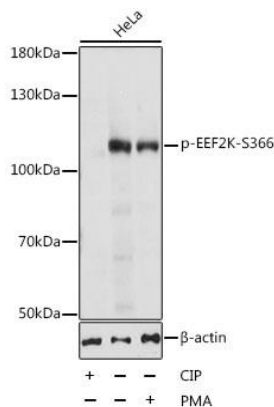
rev 12/19

CATALOG NO.: A1947-100 (100 µl)

**BACKGROUND DESCRIPTION:** This gene encodes a highly conserved protein kinase in the calmodulin-mediated signaling pathway that links activation of cell surface receptors to cell division. This kinase is involved in the regulation of protein synthesis. It phosphorylates eukaryotic elongation factor 2 (EEF2) and thus inhibits the EEF2 function. The activity of this kinase is increased in many cancers and may be a valid target for anti-cancer treatment.

<b>ALTERNATE NAMES:</b>	EEF2K; HSU93850; eEF-2K; eukaryotic elongation factor 2 kinase
<b>ANTIBODY TYPE:</b>	Polyclonal
<b>HOST/ISOTYPE:</b>	Rabbit / IgG
<b>IMMUNOGEN:</b>	A synthetic phosphorylated peptide around Ser366 of human EEF2K
<b>MOLECULAR WEIGHT:</b>	105 kDa
<b>PURIFICATION:</b>	Affinity purified
<b>FORM:</b>	Liquid
<b>FORMULATION:</b>	In PBS with 0.02% sodium azide, 50% glycerol, pH7.3
<b>SPECIES REACTIVITY:</b>	Mouse, Rat, Human
<b>STORAGE CONDITIONS:</b>	Store at -20°C. Avoid freeze / thaw cycles
<b>APPLICATIONS AND USAGE:</b>	WB 1:500 - 1:2000

**Note:** This information is only intended as a guide. The optimal dilutions must be determined by the user



Western blot analysis of extracts of HeLa cells, using phospho EEF2K (Ser366) antibody at 1:1000 dilution. HeLa cell lysate were treated by CIP (20 µl CIP for each 400 µl cell lysate) at 37°C for 1 hour or treated by PMA/TPA (200nM) for 15 minutes after serum-starvation overnight. Secondary antibody: HRP Goat Anti-Rabbit IgG (H+L) at 1:10000 dilution. Lysates/proteins: 25 µg per lane. Blocking buffer: 3% BSA. Detection: ECL Basic Kit. Exposure time: 15s.

## RELATED PRODUCTS:

Anti-p38 MAPK Rabbit Monoclonal Antibody (A1125)  
 Anti-EEF1A Antibody (A1207)  
 Anti-EEF2 Antibody (4B3-G7-H5) (A1314)  
 Phospho-AMPKβ1 (Ser182) Antibody (A1248)

**FOR RESEARCH USE ONLY! Not to be used on humans.**