

# Anti-IFITM1 Antibody

10/19

**CATALOG NO.:** A1932-100 100 µl.

**BACKGROUND DESCRIPTION:** Interferon-induced transmembrane protein 1 (IFITM1) is a 17-kDa membrane protein that is part of membrane complexes transducing homotypic adhesion signals in lymphocytes. Originally identified as Leu13, it is a cell-surface membrane protein that is encoded on the short arm of chromosome 11. Its expression is induced by type I and II interferons. IFITM1 is involved in many cellular functions such as adhesion, proliferation, immunity and antiviral activity. IFITM1 is found to be overexpressed in some types of cancers such as gastrointestinal, colorectal, and breast cancers.

**ALTERNATE NAMES:** IFITM1; 9-27; CD225; DSPA2a; IFI17; LEU13; interferon-induced transmembrane protein 1

**ANTIBODY TYPE:** Polyclonal

**HOST/ISOTYPE:** Rabbit / IgG

**IMMUNOGEN:** A synthetic peptide corresponding to a sequence within aa 50 to the C-terminus of human IFITM1 (NP\_003632.3)

**MOLECULAR WEIGHT:** 17kDa

**PURIFICATION:** Affinity purified

**FORM:** Liquid

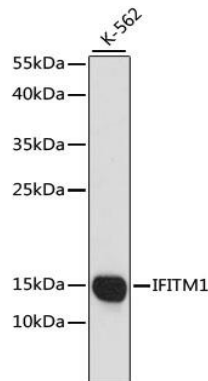
**FORMULATION:** In PBS with 0.02% sodium azide, 50% glycerol, pH7.3

**SPECIES REACTIVITY:** Mouse, Human

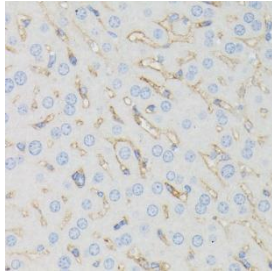
**STORAGE CONDITIONS:** Store at -20°C. Avoid freeze / thaw cycles

**APPLICATIONS AND USAGE:** WB 1:200 - 1:2000; IHC 1:50 - 1:200

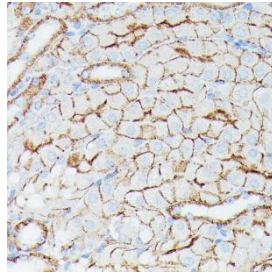
**Note:** This information is only intended as a guide. The optimal dilutions must be determined by the user



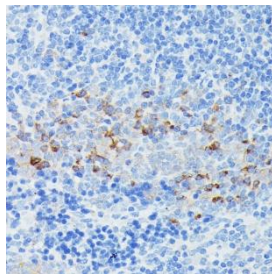
Western blot analysis of extracts of K-562 cells, using IFITM1 antibody at 1:1000 dilution. Secondary antibody: HRP Goat Anti-Rabbit IgG (H+L) at 1:10000 dilution. Lysates/proteins: 25 µg per lane. Blocking buffer: 3% nonfat dry milk in TBST. Detection: ECL Basic Kit. Exposure time: 90s.



Immunohistochemistry of paraffin-embedded mouse liver using IFITM1 antibody at dilution of 1:100 (40x lens)



Immunohistochemistry of paraffin-embedded mouse kidney using IFITM1 antibody at dilution of 1:100 (40x lens)



Immunohistochemistry of paraffin-embedded mouse spleen using IFITM1 antibody at dilution of 1:100 (40x lens)

**RELATED PRODUCTS:**

- Anti-CD19, Rabbit Monoclonal Antibody (A1829)
- Anti-Phospho-EGFR (Tyr1173) Rabbit Monoclonal Antibody (A1593)
- Anti-human CD81 Antibody (A1504)
- Anti-CD44 Antibody (A1910)

***FOR RESEARCH USE ONLY! Not to be used on humans.***