

# Anti-GAPDH, Rabbit Monoclonal Antibody

**CATALOG NO.:** A1814-50 50 µl.

**BACKGROUND DESCRIPTION:** Rabbit monoclonal to GAPDH.

**ANTIBODY TYPE:** Monoclonal

**CLONE:** RM114

**HOST/ISOTYPE:** Rabbit / Rabbit IgG.

**IMMUNOGEN:** A peptide corresponding to the C-terminus of GAPDH.

**SPECIFICITY:** This antibody reacts to GAPDH.

**PURIFICATION:** Protein A affinity purified from an animal origin-free culture supernatant.

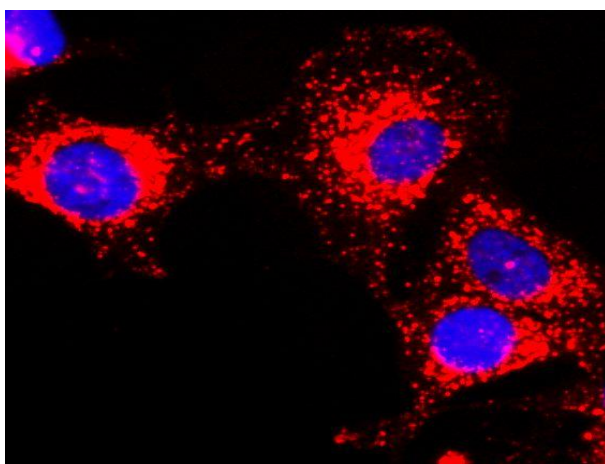
**FORM:** Liquid.

**FORMULATION:** 50% Glycerol/PBS with 1% BSA and 0.09% sodium azide

**SPECIES REACTIVITY:** All species.

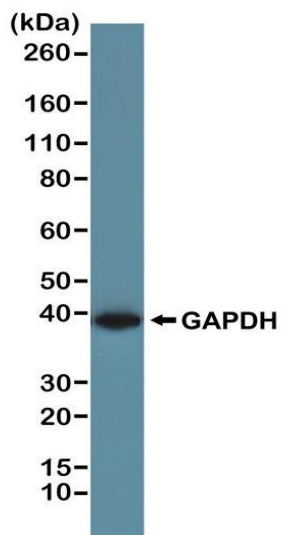
**STORAGE CONDITIONS:** Store at -20°C. Avoid repeated freeze / thaw cycles.

**APPLICATIONS AND USAGE:** Immunoprecipitation (IP): 1:200 dilution.  
Western Blot (WB): 1:1000 dilution.  
Chromatin IP (ChIP): 1:200 dilution.  
Immunocytochemistry (ICC): 1:200 dilution.  
Immunohistochemistry (IHC): 1:200 dilution.



Immunocytochemical staining of HeLa cells, using anti-GAPDH Clone RM114 at 1/200 dilution (red). Nuclei have been labeled with DAPI (blue).

06/19



Western blot of A431 cells, using anti-GAPDH Clone RM114 at 1/1000 dilution, showed a band of GAPDH at the predicted MW (~36 kDa).

**RELATED PRODUCTS:**

- Anti-Human IgG3, Rabbit Monoclonal Antibody (Cat# A1807).
- Anti-Human IgG4, Rabbit Monoclonal Antibody (Cat# A1808).
- Anti- $\alpha$ -Tubulin, Rabbit Monoclonal Antibody (Cat# A1812).
- Anti-Human IgG1, Rabbit Monoclonal Antibody (Cat# A1801).
- Anti-PEG, Rabbit Monoclonal Antibody (Cat# A1811).
- Anti-Human IgG4 Fc, Rabbit Monoclonal Antibody (Cat# A1809).
- Anti-Phosphothreonine, Rabbit Monoclonal Antibody (Cat# A1810).
- Anti-Human IgG2, Rabbit Monoclonal Antibody (Cat# A1802).

***FOR RESEARCH USE ONLY! Not to be used on humans.***