

# Anti-Human IgG3, Rabbit Monoclonal Antibody

**CATALOG NO.:** A1807-50 50 µg.

**BACKGROUND DESCRIPTION:** Rabbit monoclonal to Human IgG3.

**ANTIBODY TYPE:** Monoclonal

**CLONE:** RM119

**CONCENTRATION:** 1.0 mg/ml

**HOST/ISOTYPE:** Rabbit / Rabbit IgG.

**IMMUNOGEN:** Human IgG3.

**SPECIFICITY:** RM119 reacts to the heavy chain of human IgG3, RM119 does not cross react to any other IgG subclasses (IgG1, IgG2, or IgG4), and shows no cross reactivity IgM, IgA, IgD, IgE. RM119 does not react to monkey (Cyno or Rhesus) IgG, mouse IgG, rat IgG, or goat IgG.

**PURIFICATION:** Protein A affinity purified from an animal origin–free culture supernatant.

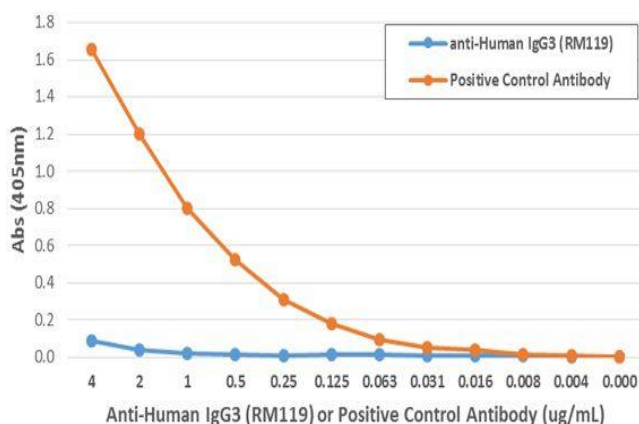
**FORM:** Liquid.

**FORMULATION:** 50% Glycerol/PBS with 1% BSA and 0.09% sodium azide

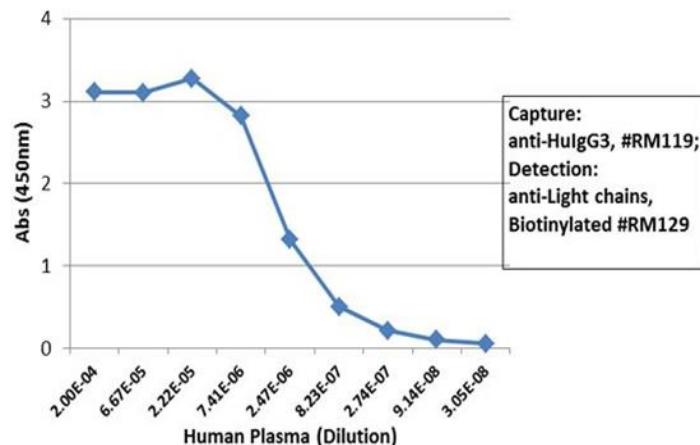
**SPECIES REACTIVITY:** Human.

**STORAGE CONDITIONS:** Store at -20°C. Avoid repeated freeze / thaw cycles.

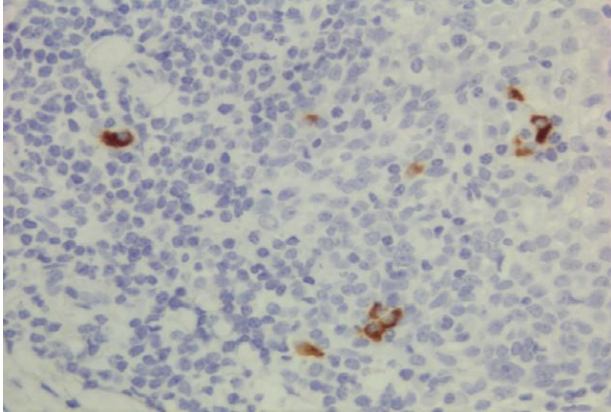
**APPLICATIONS AND USAGE:** Immunohistochemistry (IHC): 0.5 µg/ml-2 µg/ml.  
0.05 µg/mL – 0.2 µg/ml (for Detection).  
ELISA: 50 ng/well – 200 ng/well (for Capture).  
Immunocytochemistry (ICC): 0.5 µg/ml-2 µg/ml.



ELISA showing RM119 does not react to monkey IgG. The plate was coated with Rhesus monkey IgG. A serial dilution of RM119 and a monkey IgG binding antibody (positive control) was used as the detection antibody.

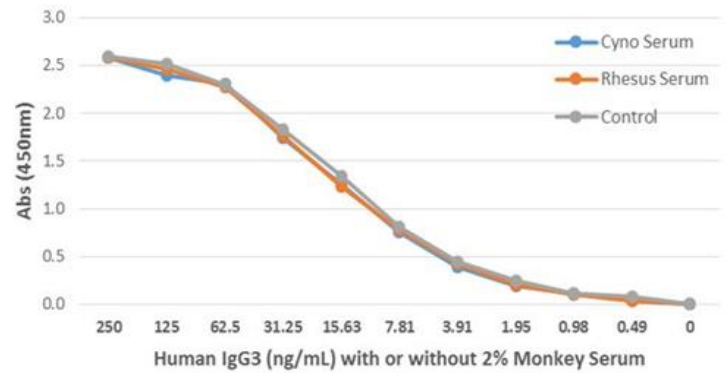


Sandwich ELISA using RM119 as the capture antibody (100ng/well), and biotinylated anti-human light chains (κ+ λ) antibody RM129 as the detection antibody, followed by an HRP conjugated streptavidin.

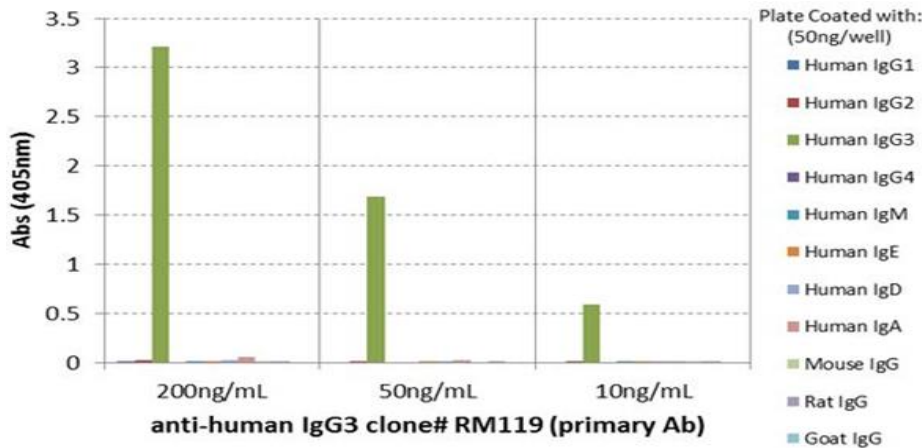


Immunohistochemically staining of formalin fixed and paraffin embedded human lymphoid tissue section using anti-human IgG3 rabbit monoclonal antibody.

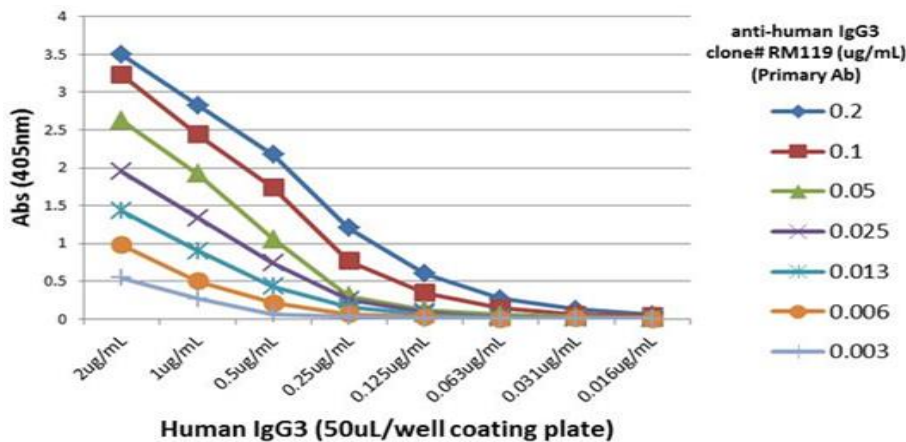
Sandwich ELISA (Capture: RM119; Detection: Biotin-RM129)



Detection of human IgG3 in monkey serum. Sandwich ELISA using RM119 as the capture antibody, and biotinylated anti-human light chains ( $\kappa + \lambda$ ) antibody RM129 as the detection antibody, followed by a HRP conjugated streptavidin.



ELISA showing RM119 reacts only to human IgG3 and not to any other IgG subclasses (IgG1, IgG2, or IgG4), and no cross reactivity to IgM, IgA, IgD, IgE, mouse IgG, rat IgG, or goat IgG.



A titer ELISA using RM119. The plate was coated with different amounts of human IgG3. A serial dilution of RM119 was used as the primary antibody, followed by an alkaline phosphatase conjugated anti-rabbit IgG as the secondary antibody.

**RELATED PRODUCTS:**

- Anti-Mouse IgG2b Rabbit Monoclonal Antibody (Cat# A1785).
- Anti-Mouse IgG3 Rabbit Monoclonal Antibody (Cat# A1786).
- Anti-Mouse IgG Rabbit Monoclonal Antibody (Cat# A1781).
- Anti-Human IgG1, Rabbit Monoclonal Antibody (Cat# A1801).
- Anti-Mouse IgG2c Rabbit Monoclonal Antibody (Cat# A1789).
- Anti-Mouse IgG2a Rabbit Monoclonal Antibody (Cat# A1784).

**FOR RESEARCH USE ONLY! Not to be used on humans.**