

03/19

Anti-Caspase-3 Antibody

CATALOG NO.: A1751-100 100 µl.

BACKGROUND DESCRIPTION: This gene encodes a protein which is a member of the cysteine-aspartic acid protease (caspase) family. Sequential activation of caspases plays a central role in the execution-phase of cell apoptosis. Caspases exist as inactive proenzymes which undergo proteolytic processing at conserved aspartic residues to produce two subunits, large and small, that dimerize to form the active enzyme. This protein cleaves and activates caspases 6, 7 and 9, and the protein itself is processed by caspases 8, 9 and 10. It is the predominant caspase involved in the cleavage of amyloid-beta 4A precursor protein, which is associated with neuronal death in Alzheimer's disease. Alternative splicing of this gene results in two transcript variants that encode the same protein.

ALTERNATE NAMES: CASP3, Caspase 3, apoptosis-related cysteine protease, CPP32B, Cysteine protease CPP32, SCA-1, SREBP cleavage activity 1.

ANTIBODY TYPE: Polyclonal

CONCENTRATION: 0.6 mg/ml

HOST/ISOTYPE: Rabbit / IgG.

IMMUNOGEN: Recombinant protein of human CASP3.

MOLECULAR WEIGHT: 32 kDa.

PURIFICATION: Affinity purification.

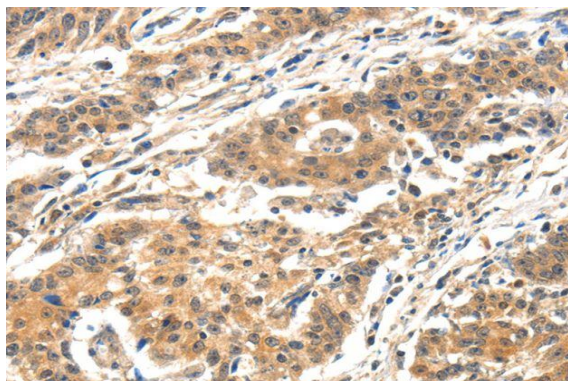
FORM: Liquid.

FORMULATION: PBS with 0.05% sodium azide, 50% glycerol, PH7.3

SPECIES REACTIVITY: Rat.
Mouse.
Human.

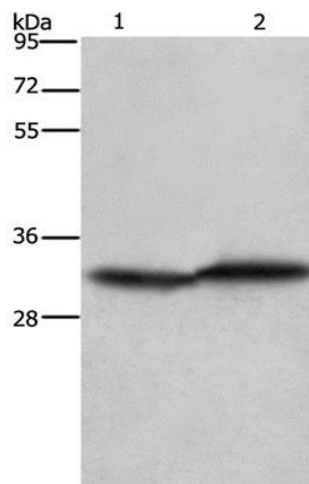
STORAGE CONDITIONS: Store at -20°C. Avoid freeze / thaw cycles.

APPLICATIONS AND USAGE: WB 1:200-1:1000, IHC 1:50-1:200.



: IHC staining of paraffin-embedded Human gastric cancer using Anti-Caspase-3 Antibody.

03/19



: Western Blot analysis of Jurkat and 293T cell using Anti-Caspase-3 Antibody.

RELATED PRODUCTS:

- Caspase-3 Antibody (3138).
- Caspase-3 (CASP3) (Mouse) ELISA Kit (E4591).
- Anti-Caspase-3 Rabbit Monoclonal Antibody (A1120).
- Caspase-3 (Active) Antibody (3015).
- Caspase-3, human recombinant (1083).
- Caspase-3 Antibody (Clone C33) (3004).

FOR RESEARCH USE ONLY! Not to be used on humans.