

# Anti-AGR2 Antibody

**CATALOG NO.:** A1745-100 100 µl.

**BACKGROUND DESCRIPTION:** Anterior gradient protein 2 homolog (AGR2) is a human protein originally discovered in *Xenopus laevis*, encoded for by the gene of the same name. In *Xenopus* AGR2 is an important role in cement gland differentiation, however in human cancer cell lines high levels of AGR2 correlate with reduction of the p53 response and AGR2 levels are elevated in the preneoplastic tissue Barrett's oesophagus.

**ALTERNATE NAMES:** Anterior gradient protein 2 homolog, AG-2, hAG-2, HPC8, Secreted cement gland protein XAG-2 homolog, AGR2.

**ANTIBODY TYPE:** Polyclonal

**CONCENTRATION:** 0.3 mg/ml

**HOST/ISOTYPE:** Rabbit / IgG.

**IMMUNOGEN:** Recombinant protein of human AGR2.

**MOLECULAR WEIGHT:** 20 kDa.

**PURIFICATION:** Affinity purification.

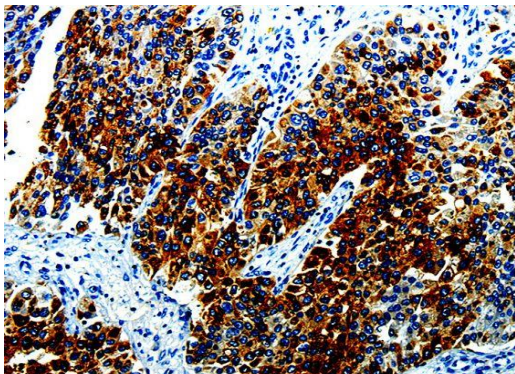
**FORM:** Liquid.

**FORMULATION:** PBS with 0.05% sodium azide, 50% glycerol, PH7.3

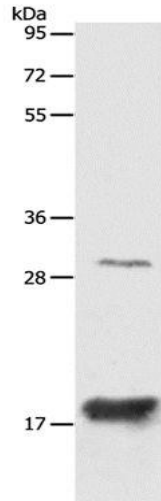
**SPECIES REACTIVITY:** Mouse.  
Human.

**STORAGE CONDITIONS:** Store at -20°C; Store at -20°C. Avoid repeated freeze/thaw cycles..

**APPLICATIONS AND USAGE:** WB 1:1000-1:5000, IHC 1:10-1:50.



: IHC staining of paraffin-embedded Human renal cancer using Anti-AGR2 Antibody.



: Western Blot analysis of Mouse Large intestine tissue using Anti-AGR2 Antibody.

**RELATED PRODUCTS:**

BRCA1 Antibody (3364).  
Anterior gradient 2 homolog, human recombinant (P1154).  
Amphiregulin, Human Recombinant (7114).  
Anti-AGR2 Antibody (A1008).

***FOR RESEARCH USE ONLY! Not to be used on humans.***