

# Anti-ADD1 Antibody

**CATALOG NO.:** A1744-100 100 µl.

**BACKGROUND DESCRIPTION:** Adducins are a family of cytoskeleton proteins encoded by three genes (alpha, beta, and gamma). Adducin is a heterodimeric protein that consists of related subunits, which are produced from distinct genes but share a similar structure. Alpha- and beta-adducin include a protease-resistant N-terminal region and a protease-sensitive, hydrophilic C-terminal region. Alpha- and gamma-adducins are ubiquitously expressed. In contrast, beta-adducin is expressed at high levels in brain and hematopoietic tissues. Adducin binds with high affinity to Ca(2+)/calmodulin and is a substrate for protein kinases A and C. Alternative splicing results in multiple variants encoding distinct isoforms; however, not all variants have been fully described.

**ALTERNATE NAMES:** ADDA, Adducin 1 (alpha), Alpha adducin, Alpha-adducin, Erythrocyte adducin alpha subunit, Erythrocyte adducin subunit.

**ANTIBODY TYPE:** Polyclonal

**CONCENTRATION:** 0.4 mg/ml

**HOST/ISOTYPE:** Rabbit / IgG.

**IMMUNOGEN:** Recombinant protein of human ADD1.

**PURIFICATION:** Affinity purification.

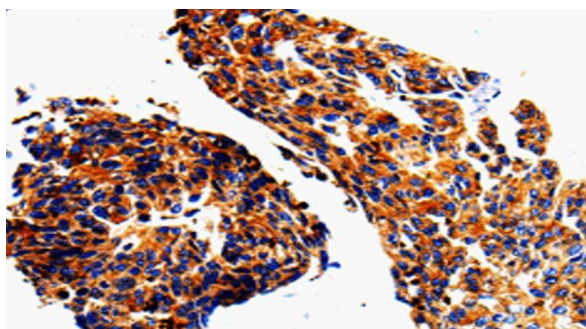
**FORM:** Liquid.

**FORMULATION:** PBS with 0.05% sodium azide, 50% glycerol, PH7.3

**SPECIES REACTIVITY:** Rat.  
Mouse.  
Human.

**STORAGE CONDITIONS:** Store at -20°C; Store at -20°C; For long term storage store at -20°C in small aliquots to prevent freeze-thaw cycles.

**APPLICATIONS AND USAGE:** IHC 1:50-1:200.



: IHC staining of paraffin-embedded Human lung cancer tissue using Anti-ADD1 Antibody.

## RELATED PRODUCTS:

Felbamate (B2004).  
 Link-FAST™ 5 Minutes DNA Ligation Kit (K902).  
 USP15 Antibody (6135).  
 USP5 Antibody (6132).

**FOR RESEARCH USE ONLY! Not to be used on humans.**