

Anti-AFP Antibody

CATALOG NO.: A1738-100 100 µl.

BACKGROUND DESCRIPTION: This gene encodes alpha-fetoprotein, a major plasma protein produced by the yolk sac and the liver during fetal life. Alpha-fetoprotein expression in adults is often associated with hepatoma or teratoma. However, hereditary persistence of alpha-fetoprotein may also be found in individuals with no obvious pathology. The protein is thought to be the fetal counterpart of serum albumin, and the alpha-fetoprotein and albumin genes are present in tandem in the same transcriptional orientation on chromosome 4. Alpha-fetoprotein is found in monomeric as well as dimeric and trimeric forms, and binds copper, nickel, fatty acids and bilirubin. The level of alpha-fetoprotein in amniotic fluid is used to measure renal loss of protein to screen for spina bifida and anencephaly.

ALTERNATE NAMES: AFPD, Alpha fetoglobulin, Alpha fetoprotein, Alpha fetoprotein precursor, Alpha-1-fetoprotein, FETA, FETA.

ANTIBODY TYPE: Polyclonal

CONCENTRATION: 0.5 mg/ml

HOST/ISOTYPE: Human/Mouse chimeric / IgG.

IMMUNOGEN: Recombinant protein of human AFP.

MOLECULAR WEIGHT: 69kDa.

PURIFICATION: Affinity purification.

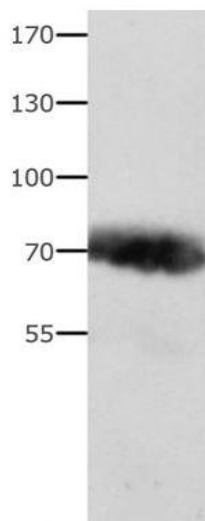
FORM: Liquid.

FORMULATION: PBS with 0.05% sodium azide, 50% glycerol, PH7.3

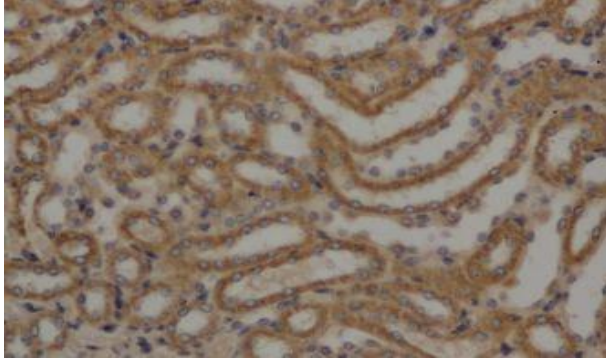
SPECIES REACTIVITY: Human.

STORAGE CONDITIONS: Store at 4°C; For long term storage store at -20°C in small aliquots to prevent freeze-thaw cycles.

APPLICATIONS AND USAGE: WB 1:1000-1:5000, IHC 1:50-1:200.



Western Blot analysis of Human liver cancer tissue using AFP Polyclonal Antibody at dilution of 1:800.



Immunohistochemistry of paraffin-embedded Mouse kidney using AFP Polyclonal Antibody at dilution of 1:50.

RELATED PRODUCTS:

Anti-AFP Antibody (C3) (A1423).
Anti-AFP Antibody (2E1C10) (A1354).
Alpha-Fetoprotein (AFP) ELISA (K4242).
Anti-AFP Antibody (1D9H5) (A1353).
Anti-AFP Antibody (3B6G7) (A1355).

FOR RESEARCH USE ONLY! Not to be used on humans.