

Anti-Enterokinase Antibody

CATALOG NO.: A1710-100
A1710-30T

BACKGROUND DESCRIPTION: Enterokinase (EC 3.4.21.9) is a serine protease involved in the activation of trypsinogen to trypsin, which in turn results in the activation of various digestive enzymes. It recognizes a highly specific amino acid sequence 'DDDDK' and cleaves after the lysine residue. High specific activity of enterokinase has been utilized in cleaving a variety of native or fusion protein tags containing the above recognition motif.

ALTERNATE NAMES: Enteropeptidase, Serine protease 7, Transmembrane protease serine 15, TMPRSS15, ENTK, PRSS7.

AMOUNT: 30 µg.
100 µg.

HOST/ISOTYPE: Rabbit / IgG.

IMMUNOGEN: Recombinant human Enterokinase light chain (Cat. No. 7529).

PURIFICATION: Affinity purification.

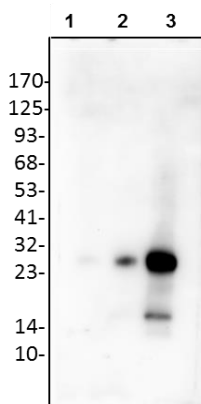
FORM: Liquid.

FORMULATION: In PBS, 30% glycerol, 0.5% BSA, 5 mM EDTA and 0.03% proclin

SPECIES REACTIVITY: Human.

STORAGE CONDITIONS: Store at -20°C; For long term storage store at -20°C in small aliquots to prevent freeze-thaw cycles..

APPLICATIONS AND USAGE: Western Blotting. 1-4 µg



Western blot analysis of recombinant human Enterokinase using anti-Enterokinase antibody.

Lane 1: Recombinant human Enterokinase light chain 1 ng.
Lane 2: Recombinant human Enterokinase light chain 10 ng.
Lane 3: Recombinant human Enterokinase light chain 50 ng.

RELATED PRODUCTS:

Enterokinase Inhibitor Screening Kit (K759).
Enterokinase, human recombinant, lyophilized (7136).
Enterokinase Activity Fluorometric Assay Kit (K758).
Enterokinase, Light Chain, human recombinant (7529).

FOR RESEARCH USE ONLY! Not to be used on humans.