

Anti-REX 1 Antibody

CATALOG NO.: A1691-100

BACKGROUND DESCRIPTION: Involved in the reprogramming of X-chromosome inactivation during the acquisition of pluripotency. Required for efficient elongation of TSIX, a non-coding RNA antisense to XIST. Binds DXPas34 enhancer within the TSIX promoter. Involved in ES cell self-renewal

ALTERNATE NAMES: Alternative Names: Expand ▼ hREX-1; Reduced Expression 1 Protein; Reduced expression protein 1; Rex-1; REX1; REX1 transcription factor; Zfp-42; Zfp42; ZFP42 zinc finger protein; ZFP42_HUMAN; Zinc finger protein 42 homolog; Zinc finger protein 754; ZNF754.

AMOUNT: 100 µl.

HOST/ISOTYPE: Rabbit / IgG.

IMMUNOGEN: Peptide sequence around aa.10~14(K-T-R-H-Q) derived from Human Rex1 (ZFP42).

MOLECULAR WEIGHT: 35 kDa.

PURIFICATION: Affinity purified.

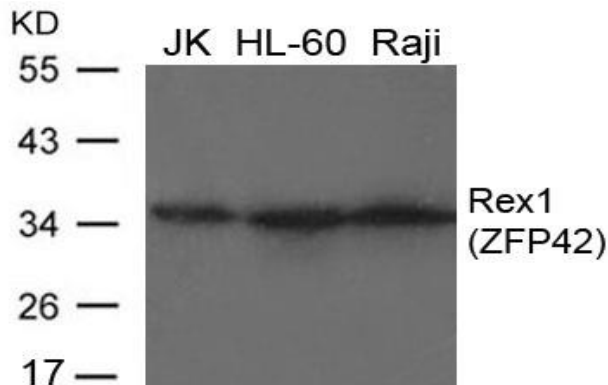
FORM: Liquid.

FORMULATION: In PBS pH 7.4, 150mM NaCl, 0.02% sodium azide and 50% glycerol.

SPECIES REACTIVITY: Human.

STORAGE CONDITIONS: Store at -20°C; For long term storage store at -20°C in small aliquots to prevent freeze-thaw cycles.

APPLICATIONS AND USAGE: Western Blotting.
ELISA.



Western blot analysis of extracts from JK, HL-60 and Raji cells using Rex1 Antibody.

RELATED PRODUCTS:

Anti-IRF-6 Antibody (A1682).
 Anti-LRH1 Antibody (A1688).
 Anti-LIN28B Antibody (A1685).
 Anti-JMJD6 Antibody (A1683).

FOR RESEARCH USE ONLY! Not to be used on humans.