

Anti-IRF6 Antibody

CATALOG NO.: A1682-100

BACKGROUND DESCRIPTION: Probable DNA-binding transcriptional activator. Key determinant of the keratinocyte proliferation-differentiation switch involved in appropriate epidermal development (By similarity). Plays a role in regulating mammary epithelial cell proliferation. May regulate WDR65 transcription.

ALTERNATE NAMES: Interferon regulatory factor 6; IRF-6.

AMOUNT: 100 µl.

HOST/ISOTYPE: Rabbit / IgG.

IMMUNOGEN: Recombinant full length protein of human IRF-6.

PURIFICATION: Affinity purification.

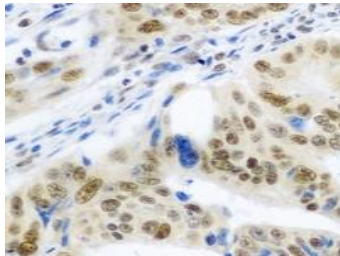
FORM: Liquid.

FORMULATION: In 0.42% Potassium phosphate; 0.87% Sodium chloride; pH 7.3; 30% glycerol; and 0.01% sodium azide.

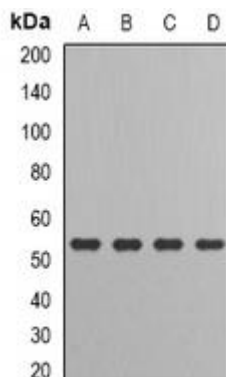
SPECIES REACTIVITY: Rat.
Mouse.
Human.

STORAGE CONDITIONS: Store at -20°C; For long term storage store at -20°C in small aliquots to prevent freeze-thaw cycles.

APPLICATIONS AND USAGE: Immunohistochemistry (IHC).
Western Blotting.



IHC analysis of IRF-6 staining in human colon cancer tissue.



Western blot analysis of IRF-6 expression in HT29 (A); MCF7 (B); mouse kidney (C); rat liver (D) whole cell lysates.

FOR RESEARCH USE ONLY!

RELATED PRODUCTS:

IRF3, human recombinant (7323).
IRF2, human recombinant (7322).
IRF1, human recombinant (7321).
IRF3 Antibody (3877).

FOR RESEARCH USE ONLY! Not to be used on humans.