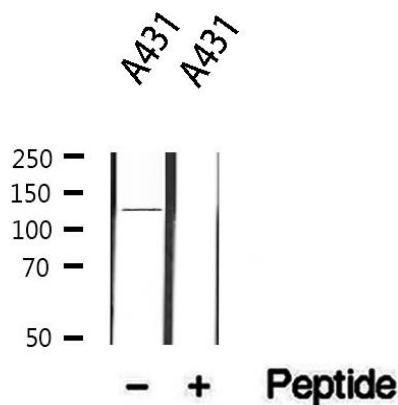


Anti-ITGA6 Antibody

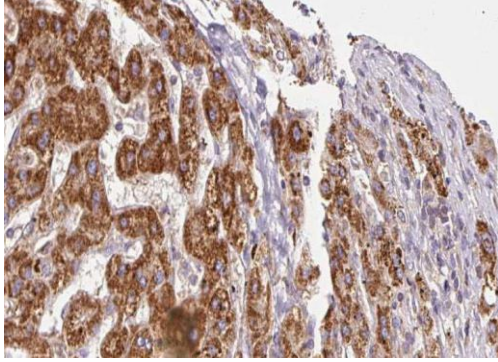
CATALOG NO.: A1681

BACKGROUND DESCRIPTION: Integrin alpha-6/beta-1 is a receptor for laminin on platelets. Integrin alpha-6/beta-4 is a receptor for laminin in epithelial cells and it plays a critical structural role in the hemidesmosome. ITGA6:ITGB4 binds to NRG1 (via EGF domain) and this binding is essential for NRG1-ERBB signaling. ITGA6:ITGB4 binds to IGF1 and this binding is essential for IGF1 signaling. ITGA6:ITGB4 binds to IGF2 and this binding is essential for IGF2 signaling.

ALTERNATE NAMES:	Alpha6p; CD49 antigen-like family member F; CD49f; Integrin alpha6B; Integrin, alpha 6; ITA6_HUMAN; ITGA6; ITGA6B; Processed integrin alpha-6; VLA 6; VLA-6.
AMOUNT:	100 µl.
HOST/ISOTYPE:	Rabbit / IgG.
IMMUNOGEN:	A synthesized peptide derived from human ITGA6.
MOLECULAR WEIGHT:	127 kDa.
PURIFICATION:	Affinity purified.
FORM:	Liquid.
FORMULATION:	In phosphate buffered saline , pH 7.4, 150mM NaCl, 0.02% sodium azide and 50% glycerol. Store at -20 °C
SPECIES REACTIVITY:	Mouse. Human.
STORAGE CONDITIONS:	Store at -20°C; For long term storage store at -20°C in small aliquots to prevent freeze-thaw cycles.
APPLICATIONS AND USAGE:	Immunohistochemistry (IHC). Western Blotting. ELISA.



FOR RESEARCH USE ONLY!



IHC staining of human liver cancer tissue using Anti-ITGA6 Antibody.

RELATED PRODUCTS:

Anti-DDIT3 Antibody (Cat. No. A1674).
Anti-Integrin beta-1 Rabbit Monoclonal Antibody (Cat. No. A1598).
Anti-DDX3 Antibody (Cat. No. A1675).
OCT4 (OCT3) Antibody (Cat. No. 6765).
Anti-TF2L1 Antibody (Cat. No. A1673).

FOR RESEARCH USE ONLY! Not to be used on humans.