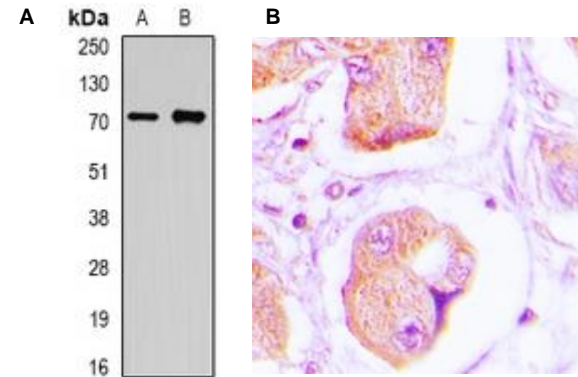


## Anti-OLFM1 Antibody

<b>CATALOG NO:</b>	A1651-100
<b>ALTERNATIVE NAMES:</b>	NOE1; NOEL1; Noelin; Neuronal olfactomedin-related ER localized protein; Olfactomedin-1
<b>AMOUNT:</b>	100 µl
<b>IMMUNOGEN:</b>	Recombinant full length protein of human OLFM1
<b>HOST/ISOTYPE:</b>	Rabbit IgG
<b>CLONALITY:</b>	Polyclonal
<b>SPECIFICITY:</b>	Recognizes endogenous levels of OLFM1 protein
<b>SPECIES REACTIVITY:</b>	Human, Mouse, Rat
<b>PURIFICATION:</b>	The antibody was purified by affinity chromatography
<b>FORM:</b>	Liquid
<b>FORMULATION:</b>	Supplied in 0.42% Potassium phosphate; 0.87% Sodium chloride; pH 7.3; 30% glycerol and 0.01% sodium azide
<b>STORAGE CONDITIONS:</b>	Shipped at 4°C. For long term storage store at -20°C in small aliquots to prevent freeze-thaw cycles
<b>DESCRIPTION:</b>	Contributes to the regulation of axonal growth in the embryonic and adult central nervous system by inhibiting interactions between RTN4R and LINGO1. Inhibits RTN4R-mediated axon growth cone collapse. May play an important role in regulating the production of neural crest cells by the neural tube. May be required for normal responses to olfactory stimuli.
<b>APPLICATION:</b>	WB; 1:500 – 1:1000, IH; 1:50 – 1:200

**Note: This information is only intended as a guide. The optimal dilutions must be determined by the user.**



**Fig. A. Western blot analysis of OLFM1 expression in A549 (A); mouse brain (B) whole cell lysates**

**Fig. B. IHC analysis of OLFM1 expression in human lung cancer tissue**

### RELATED PRODUCTS:

- Anti-NOTCH 2 Antibody (Cat. No. A1652)
- Anti-NOTCH 3 Antibody (Cat. No. A1653)
- Anti-NR2E1 Antibody (Cat. No. A1654)
- Anti-Nucleostemin Antibody (Cat. No. A1655)
- Anti-OLIG2 Antibody (Cat. No. A1656)
- Anti-PAX3 Antibody (Cat. No. A1657)
- Anti-PLAGL1 Antibody (Cat. No. A1658)
- Anti-S100B Antibody (Cat. No. A1659)
- Anti-SLUG Antibody (Cat. No. A1660)

**FOR RESEARCH USE ONLY! Not to be used on humans.**