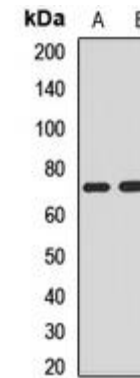


Anti-NEDD1 Antibody

CATALOG NO:	A1647-100
ALTERNATIVE NAMES:	Protein NEDD1; Neural precursor cell expressed developmentally down-regulated protein 1; NEDD-1
AMOUNT:	100 µl
IMMUNOGEN:	Recombinant full length protein of human NEDD1
HOST/ISOTYPE:	Rabbit IgG
CLONALITY:	Polyclonal
SPECIFICITY:	Recognizes endogenous levels of NEDD1 protein
SPECIES REACTIVITY:	Human, Mouse, Rat
PURIFICATION:	The antibody was purified by affinity chromatography
FORM:	Liquid
FORMULATION:	Supplied in 0.42% Potassium phosphate; 0.87% Sodium chloride; pH 7.3; 30% glycerol and 0.01% sodium azide
STORAGE CONDITIONS:	Shipped at 4°C. For long term storage store at -20°C in small aliquots to prevent freeze-thaw cycles
DESCRIPTION:	Required for mitosis progression. Promotes the nucleation of microtubules from the spindle
APPLICATION:	WB; 1:500 – 1:2000

Note: This information is only intended as a guide. The optimal dilutions must be determined by the user.



Western blot analysis of NEDD1 expression in mouse brain (A); rat brain (B) whole cell lysates.

RELATED PRODUCTS:

- GFAP Antibody (Cat. No. 3206)
- Vimentin Antibody (Cat. No. 3634)
- Fibronectin Antibody (Cat. No. 3630)
- FGF-2 Antibody (Cat. No. 5039)
- Anti-CD133 Antibody (Cat. No. A1622)
- Anti-CHRDL1 Antibody (Cat. No. A1623)

FOR RESEARCH USE ONLY! Not to be used on humans.