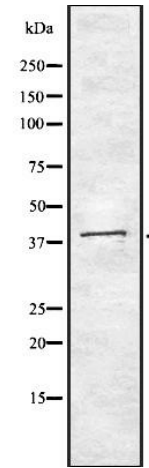


Anti-MNX1 Antibody

CATALOG NO:	A1635-100 100 µl
ALTERNATIVE NAMES:	HB 9; HB9; HLXB 9; HLXB9; Homeo box HB9; Homeobox HB9; Homeobox protein HB9; HOXHB9; MNX1; MNX1_HUMAN; Motor neuron and pancreas homeobox 1; Motor neuron and pancreas homeobox protein 1; Sacral agenesis autosomal dominant (Currarino triad); SCRA 1; SCRA1
CONCENTRATION:	1 mg/ml
IMMUNOGEN:	A synthesized peptide derived from human MNX1
HOST/ISOTYPE:	Rabbit IgG
CLONALITY:	Polyclonal
MOL WEIGHT:	41 kDa
SPECIES REACTIVITY:	Human, Mouse, Rat
PURIFICATION:	Affinity purification
FORM:	Liquid
FORMULATION:	Supplied in phosphate buffered saline, pH 7.4, 150 mM NaCl, 0.02% sodium azide and 50% glycerol
STORAGE CONDITIONS:	For long term storage store at -20°C in small aliquots to prevent freeze-thaw cycles
DESCRIPTION:	Putative transcription factor involved in pancreas development and function
APPLICATION:	WB 1:1000-1:3000 ELISA (peptide) 1:20000-1:40000

Note: This information is only intended as a guide. The optimal dilutions must be determined by the user.



Western blot analysis of LOVO whole cell lysates using MNX1 antibody

RELATED PRODUCTS:

- GFAP Antibody (Cat. No. 3206)
- Vimentin Antibody (Cat. No. 3634)
- Fibronectin Antibody (Cat. No. 3630)
- FGF-2 Antibody (Cat. No. 5039)
- Anti-CD133 Antibody (Cat. No. A1622)
- Anti-CHRDL1 Antibody (Cat. No. A1623)

FOR RESEARCH USE ONLY! Not to be used on humans.