

Anti-CTNND2 Antibody

CATALOG NO:	A1623-100 100 µg
ALTERNATIVE NAMES:	ARM-repeat protein; Catenin (cadherin associated protein) delta 2; catenin (cadherin-associated protein), delta 2 (neural plakophilin-related arm-repeat protein); Catenin delta 2; Catenin delta-2; CTND2_HUMAN; CTNND 2; Ctnnd2; Delta catenin; Delta-catenin; GT 24; GT24; Neural plakophilin related arm repeat protein; Neural plakophilin related armadillo repeat protein; Neural plakophilin-related ARM-repeat protein; Neural plakophilin-related, Neurojungin; Neurojungin; NPRAP; T cell delta catenin
CONCENTRATION:	1 mg/ml
IMMUNOGEN:	A synthesized peptide derived from human CTNND2
HOST/ISOTYPE:	Rabbit IgG
CLONALITY:	Polyclonal
MOL WEIGHT:	133 kDa
SPECIES REACTIVITY:	Human, Mouse
PURIFICATION:	Affinity purification
FORM:	Liquid
FORMULATION:	Supplied in phosphate buffered saline, pH 7.4, 150 mM NaCl, 0.02% sodium azide and 50% glycerol
STORAGE CONDITIONS:	For long term storage store at -20°C in small aliquots to prevent freeze-thaw cycles
DESCRIPTION:	Has a critical role in neuronal development, particularly in the formation and/or maintenance of dendritic spines and synapses. Involved in the regulation of Wnt signaling. It probably acts on beta-catenin turnover, facilitating beta-catenin interaction with GSK3B, phosphorylation, ubiquitination and degradation (By similarity). Functions as a transcriptional activator when bound to ZBTB3. May be involved in neuronal cell adhesion and tissue morphogenesis and integrity by regulating adhesion molecules.
APPLICATION:	WB 1:1000-1:3000 ELISA (peptide) 1:20000-1:40000
	Note: This information is only intended as a guide. The optimal dilutions must be determined by the user.

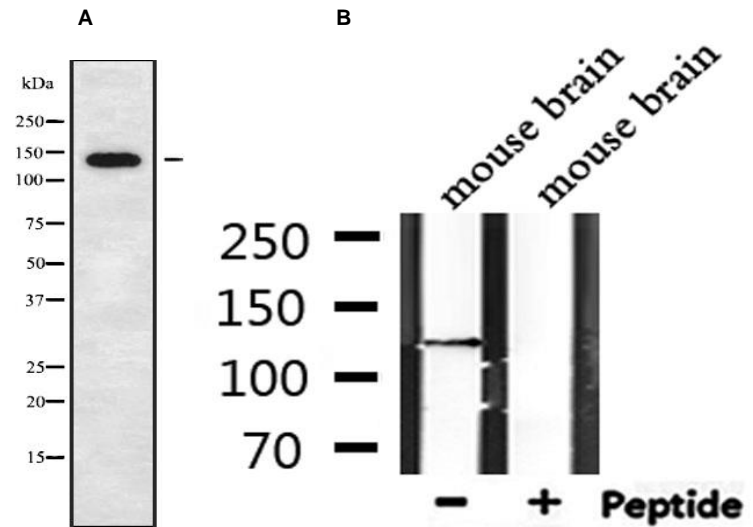


Fig. A. Western blot analysis of COLO205 lysates whole cell using CTNND2 antibody

Fig. B. Western blot analysis of extracts from mouse brain, using CTNND2 antibody

RELATED PRODUCTS:

- GFAP Antibody (Cat. No. 3206)
- Vimentin Antibody (Cat. No. 3634)
- Fibronectin Antibody (Cat. No. 3630)
- FGF-2 Antibody (Cat. No. 5039)
- Anti-CD133 Antibody (Cat. No. A1622)

FOR RESEARCH USE ONLY! Not to be used on humans.