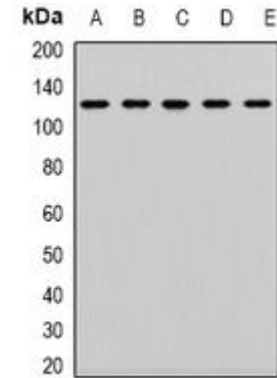


Anti-CD133 Antibody

CATALOG NO:	A1622-100
ALTERNATIVE NAMES:	PROML1; Prominin-1; Antigen AC133; Prominin-like protein 1; CD133
AMOUNT:	100 µl
IMMUNOGEN:	KLH-conjugated synthetic peptide encompassing a sequence within the N-term region of human CD133
HOST/ISOTYPE:	Rabbit IgG
CLONALITY:	Polyclonal
SPECIFICITY:	Recognizes endogenous levels of CD133 protein
SPECIES REACTIVITY:	Human, Mouse
PURIFICATION:	The antibody was purified by affinity chromatography
FORM:	Liquid
FORMULATION:	Supplied in 0.42% Potassium phosphate; 0.87% Sodium chloride; pH 7.3; 30% glycerol and 0.01% sodium azide
STORAGE CONDITIONS:	Shipped at 4°C. For long term storage store at -20°C in small aliquots to prevent freeze-thaw cycles
DESCRIPTION:	May play a role in cell differentiation, proliferation and apoptosis. Binds cholesterol in cholesterol-containing plasma membrane microdomains and may play a role in the organization of the apical plasma membrane in epithelial cells. During early retinal development acts as a key regulator of disk morphogenesis. Involved in regulation of MAPK and Akt signaling pathways. In neuroblastoma cells suppresses cell differentiation such as neurite outgrowth in a RET-dependent manner.
APPLICATION:	WB; 1:500 – 1:1000

Note: This information is only intended as a guide. The optimal dilutions must be determined by the user.



Western blot analysis of CD133 expression in K562 (A); SW620 (B); Jurkat (C); mouse kidney (D); mouse lung (E) whole cell lysates.

RELATED PRODUCTS:

- GFAP Antibody (Cat. No. 3206)
- Vimentin Antibody (Cat. No. 3634)
- Fibronectin Antibody (Cat. No. 3630)
- FGF-2 Antibody (Cat. No. 5039)
- Anti-CD133 Antibody (Cat. No. A1622)

FOR RESEARCH USE ONLY! Not to be used on humans.