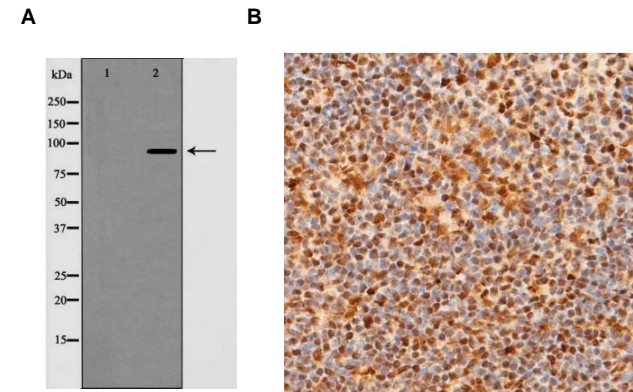


## Anti-Notch 1 (Cleaved-Val1744) Antibody

<b>CATALOG NO:</b>	A1619-100     100 µl
<b>ALTERNATIVE NAMES:</b>	AOS5; AOVD1; hN1; Lin-12; LIN12; Mis6; Motch A; mT14; Neurogenic locus notch homolog protein 1; Neurogenic locus notch protein homolog; NICD; NOTC1_HUMAN; Notch 1; Notch 1 intracellular domain; NOTCH; Notch gene homolog 1 (Drosophila); Notch homolog 1, translocation-associated (Drosophila); NOTCH, Drosophila, homolog of, 1; notch1; TAN1; Translocation associated notch homolog; Translocation associated notch protein TAN 1; Translocation-associated notch protein TAN-1; xotch
<b>CONCENTRATION:</b>	1 mg/ml
<b>IMMUNOGEN:</b>	A synthesized peptide derived from human Notch 1 (Cleaved-Val1744)
<b>HOST/ISOTYPE:</b>	Rabbit IgG
<b>CLONALITY:</b>	Polyclonal
<b>MOL WEIGHT:</b>	273 kDa
<b>SPECIES REACTIVITY:</b>	Human, Mouse, Rat
<b>PURIFICATION:</b>	Affinity purification
<b>FORM:</b>	Liquid
<b>FORMULATION:</b>	Supplied in phosphate buffered saline, pH 7.4, 150 mM NaCl, 0.02% sodium azide and 50% glycerol
<b>STORAGE CONDITIONS:</b>	For long term storage store at -20°C in small aliquots to prevent freeze-thaw cycles
<b>DESCRIPTION:</b>	Notch proteins are transmembrane receptor that regulate cell fate decisions. Four Notch homologs have been identified in mammals namely Notch 1, Notch 2, Notch 3 and Notch 4. The membrane ligand for Notch includes Jagged 1, Jagged 2 and Delta. Notch 1 is a 270 kDa transmembrane receptor that can be activated by Delta (Dl) ligand. Activation of Notch 1 will result in the proteolytic cleavage of Notch 1 into a 120 kDa length protein.
<b>APPLICATION:</b>	WB 1:500-1:2000 IHC 1:50-1:200 ELISA (peptide) 1:20000-1:40000

**Note:** This information is only intended as a guide. The optimal dilutions must be determined by the user.



**Fig. A.** Western blot analysis of 3T3 cell extract treated with etoposide using Notch 1 (Cleaved-Val1744) antibody

**Fig. B** IHC staining of Mouse spleen tissue using Notch 1 (Cleaved-Val1744) antibody

### RELATED PRODUCTS:

- Notch 1 Antibody (**Cat. No. 3881**)
- Notch 1 Blocking Peptide (**Cat. No. 3881BP**)
- Notch-1, mouse recombinant (**Cat. No. 7530**)
- Notch-2, mouse recombinant (**Cat. No. 7531**)

**FOR RESEARCH USE ONLY! Not to be used on humans.**