

Anti-Cathepsin S Antibody

CATALOG NO:	A1618-100 100 µl
ALTERNATIVE NAMES:	Cathepsin S; CathepsinS; CATS_HUMAN; Ctss
CONCENTRATION:	1 mg/ml
IMMUNOGEN:	A synthesized peptide derived from human CTSS
HOST/ISOTYPE:	Rabbit IgG
CLONALITY:	Polyclonal
MOL WEIGHT:	37 kDa
SPECIES REACTIVITY:	Human, Mouse, Rat
PURIFICATION:	Affinity purification
FORM:	Liquid
FORMULATION:	Supplied in phosphate buffered saline, pH 7.4, 150 mM NaCl, 0.02% sodium azide and 50% glycerol
STORAGE CONDITIONS:	For long term storage store at -20°C in small aliquots to prevent freeze-thaw cycles
DESCRIPTION:	<p>Cathepsin S (CTSS) is a lysosomal cysteine protease of the papain family and may participate in the degradation of antigenic proteins to peptides for presentation on MHC class II molecules. CTSS is synthesized as inactive precursor of 331 amino acids consisting of a 15-aa signal peptide, a propeptide of 99 aa, and a mature polypeptide of 217 aa. It is activated in the lysosomes by a proteolytic cleavage of the propeptide. The deduced amino acid sequence contains only one potential N-glycosylation site located in the propeptide. Compared with the abundant cathepsins B, L and H, cathepsin S shows a restricted tissue distribution, with highest levels in spleen, heart, and lung. In addition, evidences indicate that cathepsin S generates amyloid beta-peptide from amyloidogenic fragments of amyloid precursor protein (APP) in the endosomal/lysosomal compartment, and is implicated in the pathogenesis of Alzheimer's disease and Down Syndrome.</p>
APPLICATION:	WB 1:1000-1:3000 IHC 1:50-1:200 ELISA (peptide) 1:20000-1:40000

Note: This information is only intended as a guide. The optimal dilutions must be determined by the user.

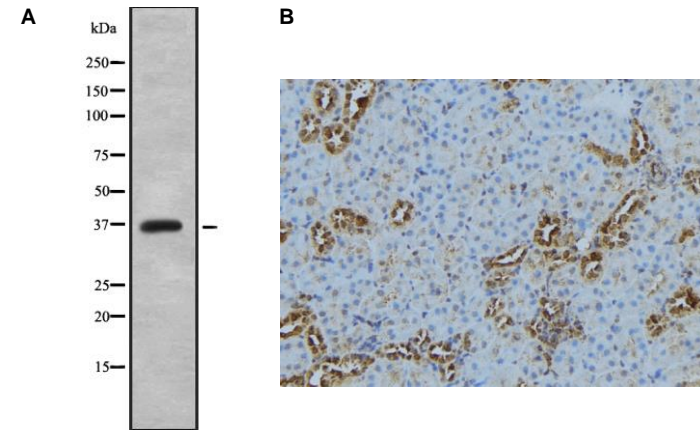


Fig. A. Western blot analysis of HuvEc whole cell lysates using Cathepsin S antibody

Fig. B IHC staining of Mouse kidney tissue using Cathepsin S antibody

RELATED PRODUCTS:

- Cathepsin S Antibody (Cat. No. 3366R)
- Cathepsin S Antibody (Cat. No. 6686)
- Cathepsin S Blocking Peptide (Cat. No. 3366RBP)
- Active Cathepsin S, human recombinant (Cat. No. 7526)
- Human CellExp™ Cathepsin S, human recombinant (Cat. No. 7277)

FOR RESEARCH USE ONLY! Not to be used on humans.