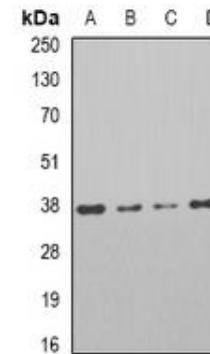


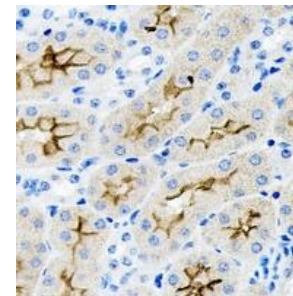
## Anti-PAR6A Antibody

<b>CATALOG NO:</b>	A1613-100
<b>ALTERNATIVE NAMES:</b>	PAR6A; Partitioning defective 6 homolog alpha; PAR-6; PAR-6 alpha; PAR-6A; PAR6C; Tax interaction protein 40; TIP-40
<b>AMOUNT:</b>	100 µl
<b>IMMUNOGEN:</b>	KLH-conjugated synthetic peptide of human PAR6A
<b>HOST/ISOTYPE:</b>	Rabbit IgG
<b>CLONALITY:</b>	Polyclonal
<b>SPECIFICITY:</b>	Recognizes endogenous levels of PAR6A protein
<b>SPECIES REACTIVITY:</b>	Human
<b>PURIFICATION:</b>	The antibody was purified by affinity chromatography
<b>FORM:</b>	Liquid
<b>FORMULATION:</b>	Supplied in 0.42% Potassium phosphate; 0.87% Sodium chloride; pH 7.3; 30% glycerol and 0.01% sodium azide
<b>STORAGE CONDITIONS:</b>	Shipped at 4°C. For long term storage store at -20°C in small aliquots to prevent freeze-thaw cycles
<b>DESCRIPTION:</b>	Adapter protein involved in asymmetrical cell division and cell polarization processes. Probably involved in the formation of epithelial tight junctions. Association with PARD3 may prevent the interaction of PARD3 with F11R/JAM1, thereby preventing tight junction assembly. The PARD6-PARD3 complex links GTP-bound Rho small GTPases to atypical protein kinase C proteins. Regulates centrosome organization and function. Essential for the centrosomal recruitment of key proteins that control centrosomal microtubule organization.
<b>APPLICATION:</b>	WB; 1:500 – 1:2000, IH; 1:50 – 1:100

**Note:** This information is only intended as a guide. The optimal dilutions must be determined by the user.



Western blot analysis of PAR6A expression in HT29 (A); Jrukat (B); Raji (C); mouse testis (D) whole cell lysates.



Immunohistochemical analysis of PAR6A staining in rat kidney

### RELATED PRODUCTS:

- Anti-PSCA Antibody (Cat. No. A1611)
- Anti-ERM/ ETV5 Antibody (Cat. No. A1612)
- Anti-ST18 Antibody (Cat. No. A1614)
- Anti-ANKRD26 Antibody (Cat. No. A1615)

**FOR RESEARCH USE ONLY! Not to be used on humans.**