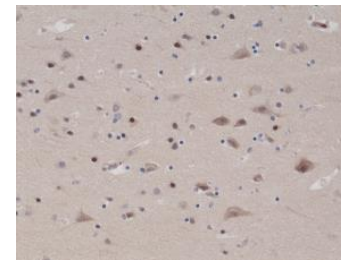


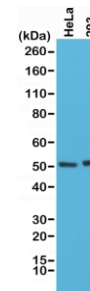
Anti-PTEN Rabbit Monoclonal Antibody

| | |
|----------------------------|---|
| CATALOG NO: | A1607-50 |
| ALTERNATIVE NAMES: | Phosphatidylinositol-3,4,5-trisphosphate 3-phosphatase and dual-specificity protein phosphatase PTEN, Phosphatase and tensin homolog, PTEN, MMAC1, TEP1, BZS, MHAM, PTEN1, 10q23del |
| AMOUNT: | 50 µl |
| CLONE: | RM265 |
| IMMUNOGEN: | A peptide corresponding to the C-terminus of human PTEN |
| HOST/ISOTYPE: | Rabbit IgG |
| SPECIES REACTIVITY: | Human, Mouse |
| PURIFICATION: | Protein A affinity purified from an animal origin free culture supernatant |
| FORM: | Liquid |
| FORMULATION: | 50% Glycerol/PBS with 1% BSA and 0.09% sodium azide |
| SPECIFICITY: | This antibody reacts to human Phosphatidylinositol 3, 4,5-trisphosphate 3-phosphatase and has dual-specificity to protein phosphatase PTEN. |
| STORAGE CONDITIONS: | For long term storage store at -20°C in small aliquots to prevent freeze-thaw cycles |
| DESCRIPTION: | PTEN, a tumor suppressor, has been implicated in a large number of human tumors and is conserved from humans to worms. Characterization of PTEN protein showed that it is a phosphatase that acts on proteins and on 3-phosphorylated phosphoinositides, and can therefore modulate signal-transduction pathways that involve lipid second messengers. Recent results indicate that at least part of its role is to regulate the activity of the serine/threonine kinase AKT/PKB, and thus influence cell survival signaling. |
| APPLICATION: | WB: 1:1000-1:2000 IHC: 1:1000-1:2000 |

Note: This information is only intended as a guide. The optimal dilutions must be determined by the user.



Immunohistochemical staining of formalin fixed and paraffin embedded human brain tissue sections using Anti-PTEN RM265 at a 1:1000 dilution.



Western Blot of HeLa and 293 cells lysates using Anti-PTEN Rabbit Monoclonal Antibody (Clone RM265) at a 1:1000 dilution

RELATED PRODUCTS:

- PTEN Antibody (Cat. No. 3479)
- PTEN (Human) ELISA Kit (Cat. No. K4193)
- PTEN, human recombinant (Cat. No. 4838)

FOR RESEARCH USE ONLY! Not to be used on humans.