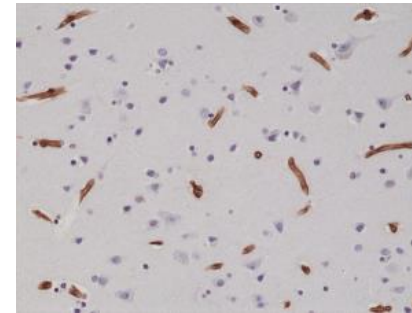


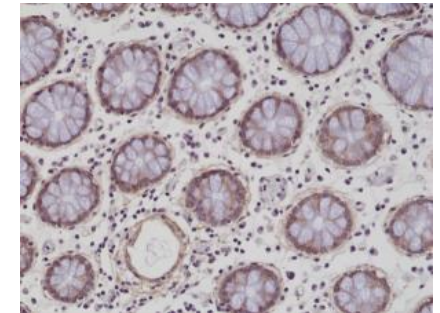
Anti-Integrin beta-1 Rabbit Monoclonal Antibody

CATALOG NO:	A1598-50
ALTERNATIVE NAMES:	Integrin beta-1, Fibronectin receptor subunit beta, GPIIA, CD29, FNRB, MDF2, MSK12
AMOUNT:	50 µl
CLONE:	RM285
IMMUNOGEN:	A peptide corresponding to the residues in human CD29 (Integrin beta-1)
HOST/ISOTYPE:	Rabbit IgG
SPECIES REACTIVITY:	Human
PURIFICATION:	Protein A affinity purified from an animal origin-free culture supernatant
FORM:	Liquid
FORMULATION:	50% Glycerol/PBS with 1% BSA and 0.09% sodium azide
SPECIFICITY:	This antibody reacts to reacts to human CD29 (Integrin beta-1).
STORAGE CONDITIONS:	For long term storage store at -20°C in small aliquots to prevent freeze-thaw cycles
DESCRIPTION:	Integrin alpha-V/beta-1 is a receptor for vitronectin. Beta-1 integrins recognize the sequence R-G-D in a wide array of ligands. Isoform 2 interferes with isoform 1 resulting in a dominant negative effect on cell adhesion and migration (in vitro). When associated with alpha-7/beta-1 integrin, regulates cell adhesion and laminin matrix deposition. Involved in promoting endothelial cell motility and angiogenesis. Involved in osteoblast compaction through the fibronectin fibrillogenesis cell-mediated matrix assembly process and the formation of mineralized bone nodules. May be involved in up-regulation of the activity of kinases such as PKC via binding to KRT1
APPLICATION:	Western Blot: 1:2000-1:4000 IHC: 1:100-1:200

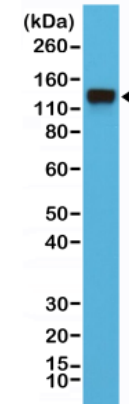
Note: This information is only intended as a guide. The optimal dilutions must be determined by the user.



Immunohistochemical staining of formalin fixed and paraffin embedded human brain tissue sections using anti-CD29 rabbit monoclonal antibody (clone RM285) at a 1:200 dilution.



Immunohistochemical staining of formalin fixed and paraffin embedded human colon tissue sections using anti-CD29 rabbit monoclonal antibody (clone RM285) at a 1:200 dilution.



Western Blot of HeLa cells lysates using Anti-CD29 Rabbit Monoclonal Antibody (Clone RM285) at a 1:4000 dilution.

RELATED PRODUCTS:

- Human CellExp™ Integrin beta-5 Extracellular Domain (ED), Human Recombinant (**Cat. No. P1172**)
- Anti-CD61/ Integrin beta-3 / Platelet Glycoprotein IIIa Antibody (CloneY2/51) (**Cat. No. 1556**)
- Anti-alpha 5 beta 1 Integrin (Volociximab), Human IgG4 Antibody (**Cat. No. A1092**)
- Human CellExp™ Integrin alpha V beta 8, Human recombinant (**Cat. No. P1122**)

FOR RESEARCH USE ONLY! Not to be used on humans.