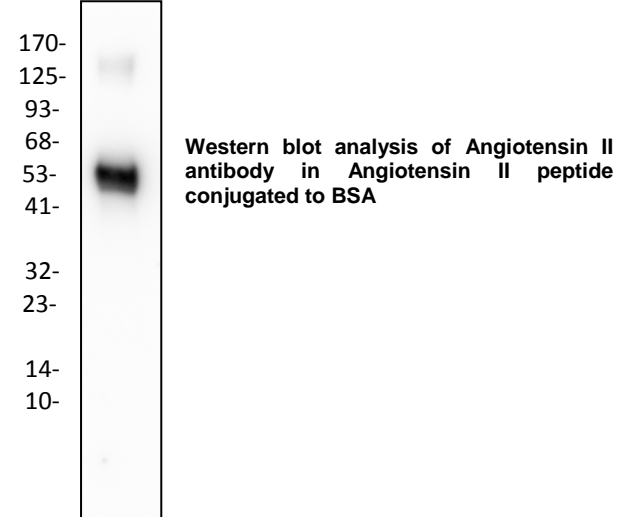


## Anti-Angiotensin II Antibody

<b>CATALOG NO:</b>	A1588-30T 30 µg (Trial size) A1588-100 100 µg
<b>ALTERNATIVE NAMES:</b>	Angiotensinogen, Serpin A8, Angiotensin-2
<b>CONCENTRATION:</b>	0.5 mg/ml
<b>IMMUNOGEN:</b>	Human Angiotensin II synthetic peptide (Cat. No. 4917)
<b>INTERNAL ID:</b>	BV-P80
<b>HOST/ISOTYPE:</b>	Rabbit IgG
<b>PURIFICATION:</b>	Affinity purified rabbit IgG
<b>FORM:</b>	Liquid
<b>FORMULATION:</b>	In PBS pH 7.2, containing 30% glycerol, 0.5% BSA, 5 mM EDTA and 0.03% proclin
<b>SPECIES REACTIVITY:</b>	Human
<b>STORAGE CONDITIONS:</b>	Store at -20°C. Avoid repeated freeze/thaw cycles.
<b>DESCRIPTION:</b>	The octapeptide angiotensin II exerts a wide range of effects on the cardiovascular system. It is also implicated in the regulation of cell proliferation, fibrosis and apoptosis. Angiotensin II is formed by cleavage of angiotensin I by angiotensin-converting enzyme (ACE) or chymases. Human heart chymase, a chymotrypsin-like serine proteinase, hydrolyzes the Phe8-His9 bond to yield the octapeptide hormone angiotensin II and His-Leu.
<b>APPLICATION:</b>	Western blot: 1-4 µg  <b>Note: This information is only intended as a guide. The optimal dilutions must be determined by the user.</b>



### RELATED PRODUCTS:

- Human Angiotensin II (**Cat. No. 4917**)
- Angiotensin II Converting Enzyme (ACE2) Activity Assay Kit (Fluorometric) (**Cat. No. K897**)
- Angiotensin I Converting Enzyme Activity (ACE1) Assay Kit (Fluorometric) (**Cat. No. K227**)
- Angiotensin I Converting Enzyme (ACE1) Inhibitor Screening Kit (**Cat. No. K228**)
- Angiotensin II Converting Enzyme (ACE2) Inhibitor Screening Kit (**Cat. No. K310**)
- Angiotensin III (Ang III)(Human) ELISA Kit (**Cat. No. E4536**)

**FOR RESEARCH USE ONLY! Not to be used on humans.**