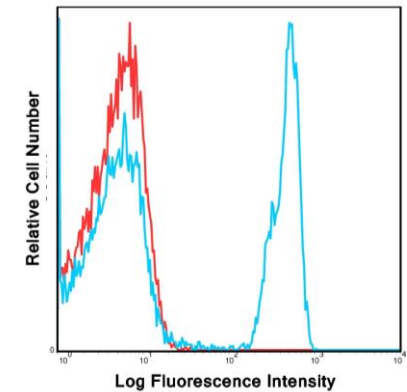


Anti-Human CD4 FITC Antibody (OKT4)

CATALOG NO:	A1582-25 25 tests A1582-100 100 tests
ALTERNATIVE NAMES:	T-cell surface glycoprotein CD4, T-cell surface antigen T4/Leu-3, CD_antigen: CD4
FORMAT/CONJUGATE:	FITC
HOST/ISOTYPE:	Mouse IgG2b, kappa
CLONALITY:	Monoclonal
CLONE:	OKT4
SPECIES REACTIVITY:	Human
PURIFICATION:	Affinity chromatography. Unreacted dye was removed from the product.
FORM:	Liquid
FORMULATION:	Phosphate-buffered aqueous solution, ≤0.09% Sodium azide, may contain carrier protein/stabilizer, pH7.2.
STORAGE CONDITIONS:	The product should be stored undiluted at 4°C and should be protected from prolonged exposure to light. Do not freeze
DESCRIPTION:	The OKT4 monoclonal antibody specifically binds to the CD4 receptor for the human immunodeficiency virus (HIV). CD4 is a 59 kDa single-chain transmembrane glycoprotein that expressed on the surface of most of the thymocytes, T-helper cells, and in low levels on monocytes and macrophages. CD4 is a co-receptor in the antigen-induced T cell activation (together with the MHC class II). The OKT4 and the RPA-T4 monoclonal antibodies recognize different epitopes of CD4 and they do not exhibit cross-block binding.
APPLICATION:	Flow Cytometry (Cell Surface): 5 µl (0.25 ug) 1/1x10 ⁶ cells per test. A test is the amount of antibody required to stain a cell sample in the final volume of 100 µL. Note: This information is only intended as a guide. The optimal dilutions must be determined by the user.

Laser: Blue (488nm)
Peak Emission: 520nm
Peak Excitation: 494nm
Filter: 530/30
Brightness (1=dim,5=brightest): 3



Human peripheral blood lymphocytes were stained with FITC OKT4 with relevant isotype control in Red.

RELATED PRODUCTS:

- CD4 FITC Monoclonal Antibody (Clone RPA-T4) (**CAT. No. 6953**)
- CD4 Antibody (**CAT. No. 6937**)
- Anti-CD4 (Clenoliximab), Human IgG4 Antibody (**CAT. No. A1091**)
- Anti-CD45RO Antibody (Clone UCHL-1) (**Cat. No. A1542**)

FOR RESEARCH USE ONLY! Not to be used on humans.