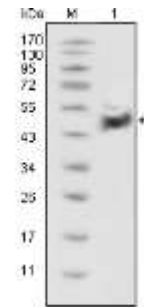


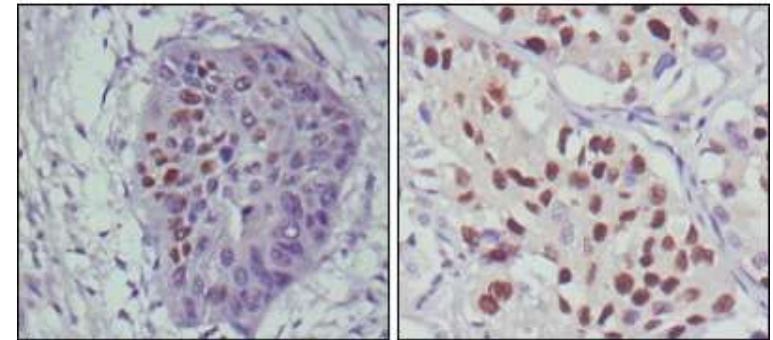
## Anti-p53 Antibody (56F12-2)

<b>CATALOG NO:</b>	A1581-100
<b>ALTERNATIVE NAMES:</b>	BCC7; Cellular tumor antigen p53; FLJ92943; LFS1; Mutant tumor protein 53; p53; p53 tumor suppressor; P53_HUMAN; Phosphoprotein p53; Tp53; Transformation related protein 53; TRP53; Tumor protein 53; Tumor protein p53; Tumor suppressor p53
<b>AMOUNT:</b>	100 µg
<b>IMMUNOGEN:</b>	Purified recombinant fragment of human p53 expressed in <i>E. coli</i>
<b>HOST/ISOTYPE:</b>	Mouse IgG1
<b>CLONALITY:</b>	Monoclonal
<b>CLONE:</b>	56F12-2
<b>MOL WEIGHT:</b>	44 kDa
<b>SPECIES REACTIVITY:</b>	Human, Mouse, Rat
<b>PURIFICATION:</b>	Affinity purified
<b>FORM:</b>	Liquid
<b>FORMULATION:</b>	Supplied in phosphate buffered saline (without Mg <sup>2+</sup> and Ca <sup>2+</sup> ), pH 7.4, 150mM NaCl, 0.02% sodium azide and 50% glycerol
<b>STORAGE CONDITIONS:</b>	Shipped at 4°C. For long term storage store at -20°C in small aliquots to prevent freeze-thaw cycles
<b>DESCRIPTION:</b>	p53 also known as tumor protein 53 or TP53. It is a tumor suppressor and transcription factor that functions in a number of anti-cancer activities including DNA repair, cell-cycle arrest, and apoptosis in response to DNA damage or other stressors. Mutations in p53 are linked to a number of malignant tumors, including those of the breast, ovarian, bladder, colon, lung, and melanoma. Anti-p53 staining has been used to detect intratubular germ cell neoplasia, and also to distinguish between uterine serous carcinoma and endometrioid carcinoma.
<b>APPLICATION:</b>	ELISA 1:10000 WB 1:500 – 1:2000 IHC 1:200 – 1:1000 IF 1:200 ELISA (peptide) 1:20000-1:40000
	<b>Note: This information is only intended as a guide. The optimal dilutions must be determined by the user.</b>



**Fig. A. Western blot analysis using p53 mouse mAb against HEK293 cell lysate**

**B**



**Fig. B. Immunohistochemical analysis of paraffin-embedded human esophageal cancer (left) and lung cancer (right), showing nuclear localization using p53 mouse mAb with DAB staining.**

### RELATED PRODUCTS:

- p53 Nuclear Translocation Assay Kit (Cell-Based) (Cat. No. K961)
- p53 Antibody (Cat. No. 3036R)
- p53 Antibody (Clone C6A5) (Cat. No. 3036)
- p53 (human) ELISA Kit (Cat. No. K4829)
- p53 Mutant, human recombinant (Cat. No. 4832)
- p53 Transcription Factor Activity Assay Kit (Cat. No. K923)
- p53R2 Polyclonal (Cat. No. 3295)
- Phospho-p53 (Ser376) Antibody (Cat. No. A1158)
- Phospho-p53 (Ser15) Translocation Assay Kit (Cell-Based) (Cat. No. K966)
- p53DINP1 Blocking Peptide (Cat. No. 3340BP)

**FOR RESEARCH USE ONLY! Not to be used on humans.**