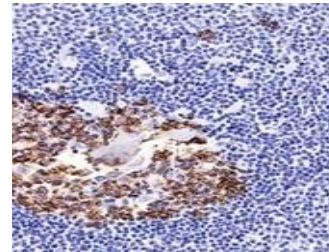


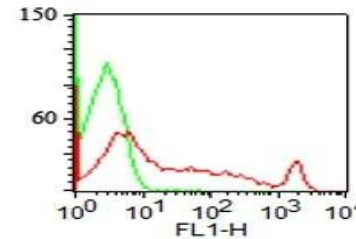
Anti- CDw75 Antibody (LN-1)

CATALOG NO:	A1573-100
ALTERNATIVE NAMES:	6-sialyltransferase 1 (6-ST1), Alpha 2,6 ST1, Beta galactoside alpha 2,6 sialyltransferase 1, CMP N acetylneuraminase beta galactosamide alpha 2,6 sialyltransferase 1, CMP-N-acetylneuraminase-beta-galactosamide-alpha-2, SIAT1, ST6 beta galactosamide alpha 2,6 sialyltransferase 1, ST6Gal I, ST6N
AMOUNT:	100 µg
IMMUNOGEN:	Nuclei from pokeweed mitogen-stimulated peripheral blood lymphocytes
HOST/ISOTYPE:	Mouse / IgM, kappa
CLONALITY:	Monoclonal
CLONE:	LN-1
MOL WEIGHT:	46 kDa
SPECIES REACTIVITY:	Human
PURIFICATION:	Purified from Bioreactor Concentrate by PEG precipitation
FORM:	Liquid
FORMULATION:	Supplied in 10 mM PBS with 0.05% BSA & 0.05% azide
STORAGE CONDITIONS:	Shipped at 4°C. Long term storage at -20°C
DESCRIPTION:	This Antibody Recognizes a neuraminidase-sensitive sialoprotein (CDw75), present on cell membrane and cytoplasm of germinal center B-cells and derived lymphomas. This mAb reacts with RBC precursors of bone marrow, ductal and ciliated epithelial cells of kidney, breast, prostate, pancreas, lung, and with glioblastomas, astrocytomas, and Reed Sternberg cells in lymphocyte predominant Hodgkin's disease. It is shown to be a helpful antibody for ascribing a B-cell phenotype in known lymphoid tissues.
APPLICATION:	FC: 0.5-1 µg/1X10 ⁶ cells in 0.1 ml IF: 0.5-1 µg/ml IHC: 0.5-1.0 µg/ml for 30 minutes at RT (Staining of formalin-fixed tissues requires boiling tissue sections in 10 mM citrate buffer, pH 6.0, for 10-20 min followed by cooling at RT for 20 minutes)

Note: This information is only intended as a guide. The optimal dilutions must be determined by the user.



Formalin-fixed, paraffin-embedded normal human Spleen stained with CDw75 Antibody (LN-1).



Surface staining of human lymphocytes with CDw75 Antibody (LN-1) (red) and isotype control (green). PPI negative population analyzed.

RELATED PRODUCTS:

- Anti-CDX-2 Antibody (IHC402) (Cat. No. A1494)
- Anti-Bcl-6 Antibody (BCL6/1527) (Cat. No. A1437)
- Anti-Bcl-6 Antibody (BCL6/1475) (Cat. No. A1436)
- Anti-CD57 Antibody (IHC539) (Cat. No. A1493)
- Anti-CD5 Antibody (Clone C5/473) (Cat. No. A1543)
- Anti-CD20 (Rituximab), Chimeric Antibody (Cat. No. A1049)

FOR RESEARCH USE ONLY! Not to be used on humans.