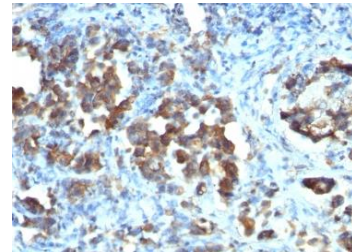


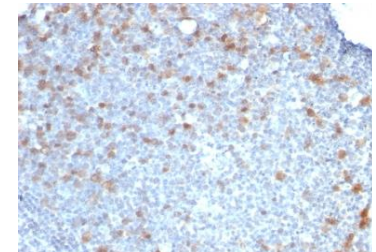
Anti-Cdc20 Antibody (CDC20/1102)

CATALOG NO:	A1572-100
ALTERNATIVE NAMES:	CDC20, CDC20A, p55CDC, P55CDC-LSB, Cell division cycle protein 20 homolog
AMOUNT:	100 µg
IMMUNOGEN:	Recombinant human Cdc20 protein
HOST/ISOTYPE:	Mouse / IgG1, kappa
CLONALITY:	Monoclonal
CLONE:	CDC20/1102
MOL WEIGHT:	55 kDa
SPECIES REACTIVITY:	Human
PURIFICATION:	Protein A/G purified
FORM:	Liquid
FORMULATION:	Supplied in 10 mM PBS with 0.05% BSA & 0.05% azide
STORAGE CONDITIONS:	Shipped at 4°C. Long term storage at -20°C.
DESCRIPTION:	Cyclins, regulatory subunits, which associate with kinases, control many of the important steps in cell cycle progression. The Cdc2 protein kinase (p34Cdc2) exhibits protein kinase activity in vitro and exists in a complex with both cyclin B and a protein homologous to p13SUC1. Cdc2 kinase is the active subunit of the M phase promoting factor (MPF) and the M phase-specific Histone H1 kinase. The p34Cdc2/cyclin B complex is required for the G2 to M transition. An additional cell cycle-dependent protein kinase, termed p55cdc, exhibits a high degree of homology with the <i>S. cerevisiae</i> proteins Cdc20 and Cdc4. The p55cdc transcript is readily detectable in a variety of cultured cell lines in growth phase, but disappears when cell growth is chemically arrested.
APPLICATION:	FC: 0.5-1 µg/1X10 ⁶ cells in 0.1ml IF: 0.5-1 µg/ml IHC: 2-4 µg/ml for 30 minutes at RT (Staining of formalin-fixed tissues requires boiling tissue sections in 10 mM Citrate Buffer, pH 6.0, for 10-20 min followed by cooling at RT for 20 minutes)

Note: This information is only intended as a guide. The optimal dilutions must be determined by the user.



Formalin-fixed, paraffin-embedded human Gastric Carcinoma stained with CDC20 Antibody (CDC20/1102)



Formalin-fixed, paraffin-embedded human Tonsil stained with CDC20 Antibody (CDC20/1102)

RELATED PRODUCTS:

- Anti-KIAA1967 Antibody (3G4-D11-D7) (Cat. No. A1336)
- MCM2 Antibody (Cat. No. 3758)
- MLS-573151 (Cat. No. 1929)
- Influenza Neuraminidase Inhibitor Susceptibility Assay Kit (Cat. No. K524)
- Phospho-Cdc2 (Tyr15) Antibody (Cat. No. A1256)
- Phospho-Cdc2 (Thr161) Antibody (Cat. No. A1255)
- Phospho-Cdk1/2/3 (Thr14) Antibody (Cat. No. A1260)
- PIM1 Antibody (Cat. No. 3787R)
- Pim 1, Active (Cat. No. 7442)
- PAK4, Active (Cat. No. 7707)

FOR RESEARCH USE ONLY! Not to be used on humans.