

## Anti-CD63 Antibody (Clone NKI/C3)

<b>CATALOG NO:</b>	A1557-100
<b>ALTERNATIVE NAMES:</b>	gp55; granulophysin; Lysosomal-associated membrane protein 3 (LAMP-3); Mast cell antigen AD1; melanoma 1 antigen; Melanoma-associated antigen MLA1; Melanoma-associated antigen ME491; MLA1; NGA; Ocular melanoma-associated antigen; OMA81H; PTLGP40; Tetraspanin-30; TSPAN30; CD63
<b>AMOUNT:</b>	100 µg
<b>IMMUNOGEN:</b>	Smooth plasma membrane fraction of MeWo cells
<b>HOST/ISOTYPE:</b>	Mouse / IgG1, kappa
<b>CLONALITY:</b>	Monoclonal
<b>CLONE:</b>	NKI/C3
<b>MOL WEIGHT:</b>	26 kDa (core protein); 30-60 kDa (glycosylated)
<b>SPECIES REACTIVITY:</b>	Human and Mouse
<b>PURIFICATION:</b>	Protein A/G purification
<b>FORM:</b>	Liquid
<b>FORMULATION:</b>	Supplied in 10 mM PBS with 0.05% BSA & 0.05% azide
<b>STORAGE CONDITIONS:</b>	Shipped at 4°C. Long term storage at -20°C.

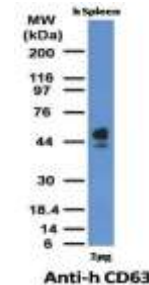
**DESCRIPTION:** This mAb recognizes protein of 26 kDa-60 kDa, which is identified as CD63. Its epitope is different from that of mAb LAMP3/529. The tetraspanins are integral membrane proteins expressed on cell surface and granular membranes of hematopoietic cells and are components of multi-molecular complexes with specific integrins. The tetraspanin CD63 is a lysosomal membrane glycoprotein that translocates to the plasma membrane after platelet activation. CD63 is expressed on activated platelets, monocytes and macrophages, and is weakly expressed on granulocytes, T cell and B cells. It is located on the basophilic granule membranes and on the plasma membranes of lymphocytes and granulocytes. CD63 is a member of the TM4 superfamily of leukocyte glycoproteins that includes CD9, CD37 and CD53, which contain four transmembrane regions. CD63 may play a role in phagocytic and intracellular lysosome-phagosome fusion events. CD63

deficiency is associated with Hermansky-Pudlak syndrome and is strongly expressed during the early stages of melanoma progression.

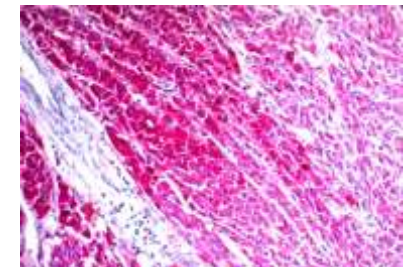
**APPLICATION:**

FC: 0.5-1 µg/1X10<sup>6</sup> cells in 0.1 ml  
 IF: 0.5-1 µg/ml  
 WB: 0.5-1 µg/ml  
 IHC: 0.5-1 µg/ml for 30 minutes at RT  
 (Staining of formalin-fixed tissues is enhanced by boiling tissue sections in 10 mM Citrate Buffer, pH 6.0, for 10-20 min followed by cooling at RT for 20 minutes)

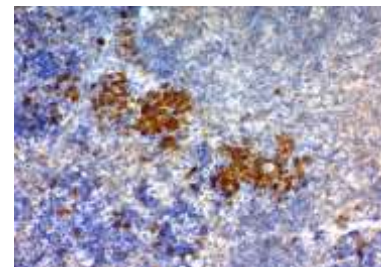
**Note:** This information is only intended as a guide. The optimal dilutions must be determined by the user.



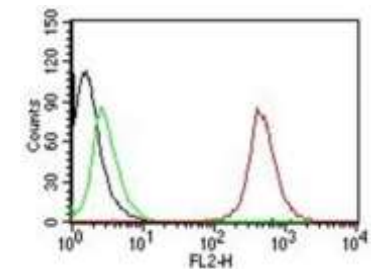
Western Blot of human spleen Lysate with CD63 Antibody (NKI/C3)



Formalin-fixed, paraffin-embedded human Melanoma stained with CD63 Antibody (NKI/C3) (AEC Chromogen)



Formalin-fixed, paraffin-embedded Mouse Spleen stained with CD63 Antibody (NKI/C3) (DAB Chromogen)



Flow Cytometry of human CD63 on MCF-7 Cells. Black: Cells alone; Green: Isotype Control; Red: PE-labeled CD63 Monoclonal Antibody (NKI/C3).

**RELATED PRODUCTS:**

- Anti-CD5 Antibody (Clone C5/473) **(Cat. No. A1543)**
- Anti-CD11a Antibody (CRIS-3) **(Cat. No. A1472)**
- Anti-CD11c Antibody (ITGAX/1243) **(Cat. No. A1474)**
- Anti-CD27 Antibody (LPFS2/1611) **(Cat. No. A1483)**
- Anti-CD35 / CR1 Antibody (E11) **(Cat. No. A1522)**
- Anti-CD43 Antibody (DF-T1) **(Cat. No. A1524)**
- Anti-human CD63 antibody **(Cat. No. A1502)**
- Anti-CD50 / ICAM-3 Antibody **(Cat. No. A1551)**
- Anti-CD54 / ICAM-1 Antibody (Clone W-CAM-1) **(Cat. No. A1552)**
- Human CellExp™ CSF1R / CD115 / CD6, human recombinant **(Cat. No. 6802)**

**FOR RESEARCH USE ONLY! Not to be used on humans.**