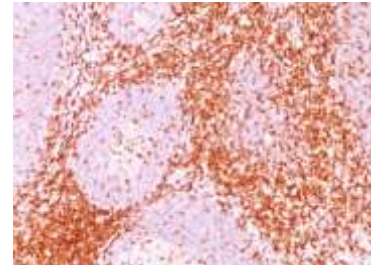


## Anti-CD6 Antibody (Clone 3F7B5)

<b>CATALOG NO:</b>	A1555-100
<b>ALTERNATIVE NAMES:</b>	T12, TP120, T-cell differentiation antigen CD6, CD6
<b>AMOUNT:</b>	100 µg
<b>IMMUNOGEN:</b>	Human rheumatoid synovial T cell line ST-1
<b>HOST/ISOTYPE:</b>	Mouse / IgG1
<b>CLONALITY:</b>	Monoclonal
<b>CLONE:</b>	3F7B5
<b>MOL WEIGHT:</b>	90-130 kDa
<b>SPECIES REACTIVITY:</b>	Human
<b>PURIFICATION:</b>	Protein A/G purification
<b>FORM:</b>	Liquid
<b>FORMULATION:</b>	Supplied in 10 mM PBS with 0.05% BSA & 0.05% azide
<b>STORAGE CONDITIONS:</b>	Shipped at 4°C. Long term storage at -20°C.
<b>DESCRIPTION:</b>	CD6 is a type I transmembrane glycoprotein that contains a 24-amino acid signal sequence, three extracellular "scavenger receptor cysteine-rich" (SRCR) domains, a membrane-spanning domain and a 44-amino acid cytoplasmic domain. The CD6 glycoprotein is tyrosine phosphorylated during TCR-mediated T cell activation. CD6 shows significant homology to CD5. CD6 is present on mature thymocytes, peripheral T cells and a subset of B cells. Antibodies to CD6 are used to deplete T cells from bone marrow transplants to prevent graft versus host disease.
<b>APPLICATION:</b>	FC: 0.5-1 µg/1X10 <sup>6</sup> cells in 0.1 ml IF: 0.5-1 µg/ml IHC: 0.5-1 µg/ml for 30 minutes at RT (Staining of formalin-fixed tissues requires boiling tissue sections in 10 mM Citrate Buffer, pH 6.0, for 10-20 min followed by cooling at RT for 20 minutes)

**Note: This information is only intended as a guide. The optimal dilutions must be determined by the user.**



**Formalin-fixed, paraffin-embedded human Tonsil stained with CD6 Antibody (3F7B5)**

### RELATED PRODUCTS:

- Anti-CD5 Antibody (Clone C5/473) **(Cat. No. A1543)**
- Anti-CD11a Antibody (CRIS-3) **(Cat. No. A1472)**
- Anti-CD11c Antibody (ITGAX/1243) **(Cat. No. A1474)**
- Anti-CD27 Antibody (LPFS2/1611) **(Cat. No. A1483)**
- Anti-CD35 / CR1 Antibody (E11) **(Cat. No. A1522)**
- Anti-CD43 Antibody (DF-T1) **(Cat. No. A1524)**
- Anti-CD45RO Antibody (Clone UCHL-1) **(Cat. No. A1542)**
- Anti-CD45RB Antibody (Clone BRA-11(same as BRA-11G)) **(Cat. No. A1541)**
- Anti-CD50 / ICAM-3 Antibody (Clone 186-2G9) **(Cat. No. A1551)**
- Anti-CD54 / ICAM-1 Antibody (Clone W-CAM-1) **(Cat. No. A1552)**
- Human CellExp™ CSF1R / CD115 / CD6, human recombinant **(Cat. No. 6802)**

**FOR RESEARCH USE ONLY! Not to be used on humans.**