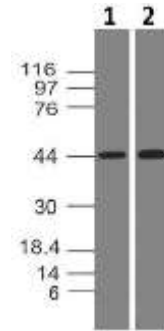


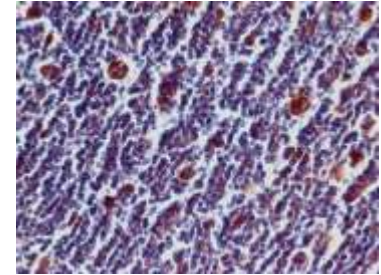
Anti-PD-L1 Monoclonal Antibody (Clone: ABM5F25)

CATALOG NO:	A1537-50
ALTERNATIVE NAMES:	CD274,B7H1,PDCD1L1,PDCD1LG1,PDL1
IMMUNOGEN:	A partial length recombinant protein of PD-L1 (amino acid 13-224) was used as the immunogen
AMOUNT:	50 µg
CLONALITY:	Monoclonal
CLONE:	ABM5F25
ISOTYPE:	Mouse IgG2b, Kappa
SPECIES REACTIVITY:	Human
FORM:	Liquid
FORMULATION:	0.5mg/ml in Supplied in PBS containing 0.05% BSA and 0.05% Sodium azide.
STORAGE CONDITIONS:	Store at 4°C, stable for 6 months. For long-term storage, store at -20°C. Avoid repeated freeze and thaw cycles
PURIFICATION:	Protein G Chromatography
DESCRIPTION:	PD-L1 (CD274/B7-H1) is a critical membrane-bound costimulatory molecule belongs to the B7 superfamily that inhibits immune responses through its receptor, PD-1 and PD-L1 play a key role in the pathogenesis of inflammatory diseases (programmed death 1). It is widely expressed in the mononuclear phagocyte system (MPS), may co-stimulate T cells and regulates inflammatory responses. PD-L1 exerts inflammation regulatory functions via a negative co-stimulatory effect on T cell functions to inhibit cytokine secretion, facilitate apoptosis of activated T cells and induce T cell anergy. Aberrant expression and dysregulation of CD274 have been reported during bacterial infection, inflammation and in numerous autoimmune diseases.
APPLICATION:	WB: 2-4 µg/ml; FACS: 0.5-1 µg/10 ⁶ cells; IHC: 5-10 µg/ml

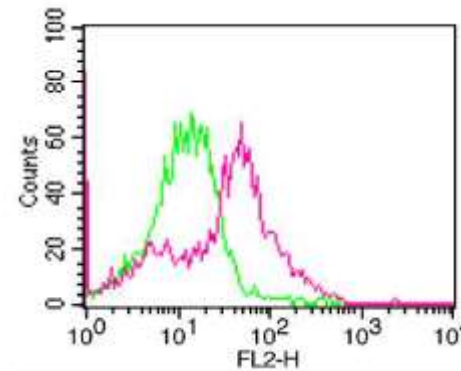
Note: This information is only intended as a guide. The optimal dilutions must be determined by the user.



Western Blot analysis of PD-L1 with 2µg/ml of **A1537** on (1)Daudi and (2) HepG2 cell lysates



IHC analysis of PD-L1 in Hodgkin's Lymphoma tissue with 5µg/ml of **A1537**



FACS analysis of PD-L1 on 3 day-PHA-treated human PBMC cells with **A1537** at 1 µg/10⁶ cells. Green represents Isotype control, Red represents anti-PDL1 antibody. Goat Anti-mouse PE conjugate was used as secondary antibody.

RELATED PRODUCTS

- PD-L1 /CD274, Human Recombinant (**Cat. No. P1023-10, -50**)
- Human CellExp™ PD-L1 /CD274 /B7-H1, mouse recombinant (**Cat. No. P1023-10, -50**)
- PD-L1/CD274 (Human) ELISA Kit (**Cat. No. K4155-100**)
- QuickDetect™ PD-L1/B7-H1 (Human) ELISA Kit (**Cat. No. K4416-100**)
- Anti-PD-L1 Antibody (**Cat. No. A1454-30, -100**)
- Anti-PD-L1 (Atezolizumab), humanized Antibody (**Cat. No. A1305-100**)
- PD-1/PD-L1 Inhibitor 1 (**Cat. No. B1213-5, -25**)

FOR RESEARCH USE ONLY! Not to be used on humans.