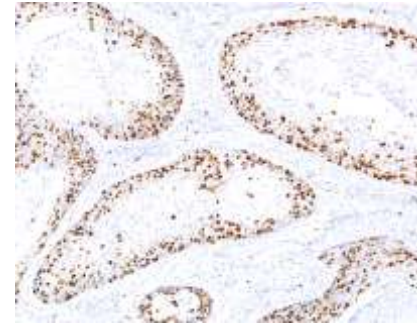


## Anti- Ki-67 Antibody (IHC067)

<b>CATALOG NO:</b>	A1521-50
<b>ALTERNATIVE NAMES:</b>	Proliferation marker protein Ki-67, Ki-67, Ki67, KI-67, MKI67
<b>AMOUNT:</b>	50 µl
<b>IMMUNOGEN:</b>	Ki-67
<b>CLONALITY:</b>	Monoclonal
<b>CLONE:</b>	IHC067
<b>MOL WEIGHT:</b>	359 kDa
<b>SPECIES REACTIVITY:</b>	Human
<b>PURIFICATION:</b>	Protein A/G purification
<b>FORM:</b>	Liquid
<b>FORMULATION:</b>	Tris Buffer, pH 7.3 - 7.7, with 1% BSA and <0.1% Sodium Azide
<b>STORAGE CONDITIONS:</b>	Shipped at 4°C. For long term storage store at 4°C. <b>Do not freeze.</b>
<b>DESCRIPTION:</b>	Ki-67 is a nuclear, non-histone protein that is expressed only during active phases of the cell cycle (G1, S, G2 and M), but not in the resting phases (G0 and G1 early phase). Although the antigen has also been associated with ribosomal RNA transcription, it is strongly linked to cell proliferation and has thus been indicated as an effective marker in grading the proliferation rate of tumors, including those of the brain, breast, cervix, and prostate.
<b>APPLICATION:</b>	IHC: 1:100 - 1:200

**Note:** This information is only intended as a guide. The optimal dilutions must be determined by the user.



Formalin-fixed, paraffin-embedded cervical cancer tissue stained with Ki-67 Antibody (IHC067)

### RELATED PRODUCTS:

- Anti-Ki67 Rabbit Monoclonal Antibody (**Cat. No. A1135**)
- MKI67 (Human) ELISA Kit (**Cat. No. E4308**)
- Phospho-NIFK (Thr234) Antibody (**Cat. No. A1157**)
- D-Lactate ELISA Kit (**Cat. No. E4356**)

**FOR RESEARCH USE ONLY! Not to be used on humans.**