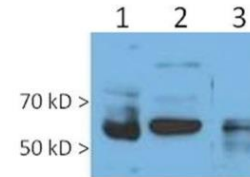


Anti-human TM9SF4 Antibody

ALTERNATE NAMES:	Transmembrane 9 Superfamily Member 4; TUCAP1 (Tumor cannibalism associated protein 1)
CATALOG NO.:	A1508-50
AMOUNT:	50 µg
HOST:	Mouse
ISOTYPE:	Mouse IgG1
CLONALITY:	Mouse Monoclonal Unconjugated
IMMUNOGEN:	N-terminal fragment of TM9SF4 protein (aa 18-279)
PURIFICATION:	Protein A affinity chromatography
MOLECULAR WEIGHT:	Predicted molecular weight is 70 kDa. However, the observed specific band detected by the monoclonal antibody in western blot (under reducing conditions) is at around 60 kDa.
FORM:	Liquid
FORMULATION:	0.5 mg/ml in Glycine (0.1 M), NaCl (0.5 M), Tris-HCl (0.1 M), Sodium Azide (15 mM), pH: 7.
SPECIES REACTIVITY:	Human
STORAGE CONDITIONS:	Store at 4°C for short term. Over 1 month, aliquot and store at -20°C. Avoid repeated freeze/thaw cycles. Do not use after expiration date stamped on vial label.
DESCRIPTION:	TM9SF4 (TUCAP1) is a new tumor associated protein that belongs to the Trans-Membrane 9 Superfamily (TM9SF), a family of proteins with unknown function. These proteins are characterized by the presence of a large variable extracellular N-terminal domain followed by nine putative transmembrane domains in the conserved C terminal domain. TM9SF4 resulted expressed in exosomes derived principally from tumoral source.
SPECIFICITY:	WB (1:500), FACS (1:200), IP
APPLICATIONS:	Western Blot (WB) (using non-reducing conditions) Fluorescent-Activated Cell Sorting (FACS)

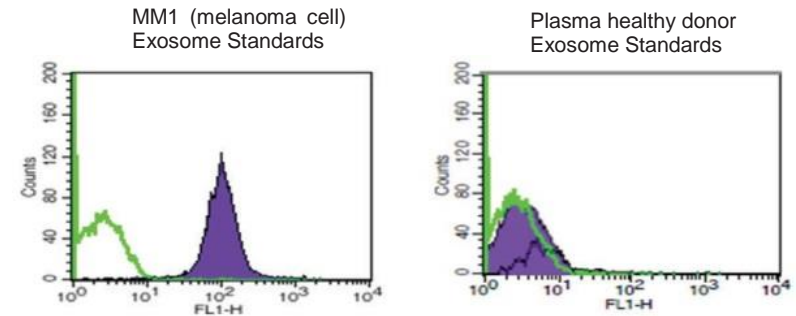
Immunoprecipitation (IP)

Note: This information is only intended as a guide. The optimal dilutions must be determined by the user.



Detection of TM9SF4 by Western Blot.

- 1- MM1 (melanoma cell) whole cell lysate (20 µg)
- 2- MM1 cell supernatant purified exosomes (20 µg)
- 3- Plasma healthy donors purified exosomes (20 µg)



Detection of TM9SF4 by FACS. Staining of TM9SF4 on MM1 purified exosomes vs human plasma exosomes (PEP) demonstrates the predominant TM9SF4 expression in exosomes derived from tumoral source.

RELATED PRODUCTS:

- Other exosome specific antibodies (Cat. No. 1500-50 to Cat. No. 1515-50)

FOR RESEARCH USE ONLY! Not to be used on humans.