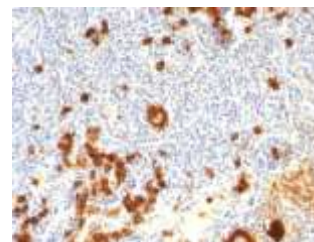


## Anti-CD15 / FUT4 Antibody (FUT4/815 + BRA-4F1)

<b>CATALOG NO:</b>	A1476-100
<b>ALTERNATIVE NAMES:</b>	3 Fucosyl N Acetyl Lactosamine; Alpha (1,3) Fucosyltransferase; Alpha 13 fucosyltransferase FucT; ELAM Ligand Fucosyltransferase; ELFT; FCT3A; Fuc-TIV; Fucosyltransferase 4 Alpha 1 3 Fucosyltransferase Myeloid Specific; Fucosyltransferase 4; Galactoside 3 L Fucosyltransferase; Lewis X; LeX; SSEA1; Stage Specific Embryonic Antigen 1
<b>AMOUNT:</b>	100 µg
<b>IMMUNOGEN:</b>	Purified human neutrophils (FUT4/815); Myelomonocytic leukemia cells (BRA-4F1)
<b>HOST/ISOTYPE:</b>	Mouse / IgM's
<b>CLONALITY:</b>	Monoclonal
<b>CLONE:</b>	FUT4/815 + BRA-4F1
<b>MOL WEIGHT:</b>	~220 kDa (Glycoprotein)
<b>SPECIES REACTIVITY:</b>	Human
<b>PURIFICATION:</b>	Purified from Bioreactor Concentrate
<b>FORM:</b>	Liquid
<b>FORMULATION:</b>	Supplied in 10 mM PBS with 0.05% BSA & 0.05% azide
<b>STORAGE CONDITIONS:</b>	Shipped at 4°C. Long term storage at -20°C.
<b>DESCRIPTION:</b>	CD15 plays a role in mediating phagocytosis, bactericidal activity, and chemotaxis. It is present on >95% of granulocytes including neutrophils and eosinophils and to a lesser degree on monocytes. In addition, CD15 is expressed in Reed-Sternberg cells and some epithelial cells. CD15 antibody is very useful in the identification of Hodgkin's disease. CD15 is occasionally expressed in large cell lymphomas of both B and T phenotypes which otherwise have a quite distinct histological appearance.
<b>APPLICATION:</b>	FC: 0.5-1ug/1X10 <sup>6</sup> cells in 0.1ml IF: 0.5-1ug/ml IHC: 0.5-1 ug/ml for 30 minutes at RT (Staining of formalin-fixed tissues requires boiling tissue sections in 10mM Tris with 1mM EDTA, pH 9.0, for 10-20 min followed by cooling at RT for 20 minutes)

**Note:** This information is only intended as a guide. The optimal dilutions must be determined by the user.



Formalin-fixed, paraffin-embedded human Hodgkin's Lymphoma stained with CD15 Monoclonal Antibody (FUT4/815 + BRA-4F1).

### RELATED PRODUCTS:

- Anti-CD11c Antibody (ITGAX/1243) (Cat. No. A1474)
- Anti-CD47 Antibody (Cat. No. A1387)
- Anti-CD106 / VCAM1 Antibody (1.4C3) (Cat. No. A1470)
- Anti-CD146 Rabbit Monoclonal Antibody (Cat. No. A1122)
- Anti-CD164 Antibody (Cat. No. A1242)
- Anti-CD223 (LAG3) Antibody (Cat. No. A1067)
- Anti-CD160 Antibody (Cat. No. A1072)
- Anti-CD137/4-1BB Antibody (Cat. No. A1087)
- Anti-CD146 Rabbit Monoclonal Antibody (Cat. No. A1122)

**FOR RESEARCH USE ONLY! Not to be used on humans.**