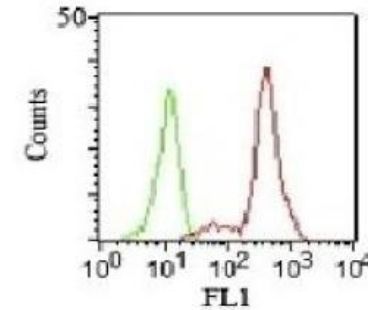


Anti-CD11c Antibody (HC1/1)

CATALOG NO:	A1473-100
ALTERNATIVE NAMES:	CD11 antigen-like family member C; Complement component 3 receptor 4 subunit; Integrin alpha-X; integrin, alpha X (antigen CD11C (p150), alpha polypeptide); Leu M5 alpha subunit; Leukocyte adhesion glycoprotein p150 95 alpha chain; Myeloid membrane antigen alpha subunit; p150/95
AMOUNT:	100 µg
IMMUNOGEN:	Human monocytic U937 phorbol ester-treated cells
HOST/ISOTYPE:	Mouse IgG1, kappa
CLONALITY:	Monoclonal
CLONE:	HC1/1
MOL WEIGHT:	145 kDa
SPECIES REACTIVITY:	Human
PURIFICATION:	Protein A/G purified
FORM:	Liquid
FORMULATION:	Supplied in 10 mM PBS with 0.05% BSA & 0.05% azide
STORAGE CONDITIONS:	Shipped at 4°C. For long term storage store at -20°C in small aliquots to prevent freeze-thaw cycles
DESCRIPTION:	CD11c, also known as Integrin, alpha X (complement component 3 receptor 4 subunit) (ITGAX), is a type I transmembrane protein found at high levels on most human dendritic cells, but also on monocytes, macrophages, neutrophils, and some B cells that induces cellular activation and helps trigger neutrophil respiratory burst; expressed in hairy cell leukemias, acute non-lymphocytic leukemias, and some B-cell chronic lymphocytic leukemias.
APPLICATION:	FC: 0.5-1 µg/1X10 ⁶ cells IF: 0.5-1 µg/ml

Note: This information is only intended as a guide. The optimal dilutions must be determined by the user.



FCM staining of human PBMC's using CD11c Monoclonal Antibody (HC1/1)

RELATED PRODUCTS:

- Anti-CD11a (Efalizumab), Human IgG1 Antibody (**Cat. No. A1089**)
- Anti-human CD41 antibody (**Cat. No. A1503**)

FOR RESEARCH USE ONLY! Not to be used on humans.