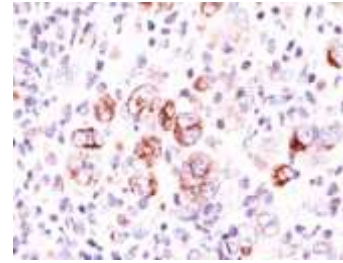


Anti-Bcl-X Antibody (2H12)

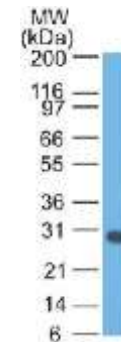
CATALOG NO:	A1438-100
ALTERNATIVE NAMES:	Apoptosis regulator Bcl-X, B cell lymphoma 2 like, BCL XL/S, Bcl-2-like protein 1, Bcl2-L-1, BCL2L, Bcl2l1, BCLX, BclXL, BclXs, Protein phosphatase 1 regulatory subunit 52 (PPP1R52)
AMOUNT:	100 µg
IMMUNOGEN:	A synthetic peptide, aa 3-14 (Cys-QSNRELVVDFLS) of human Bcl-X protein
HOST/ISOTYPE:	Mouse IgG2a
CLONALITY:	Monoclonal
CLONE:	2H12
MOL WEIGHT:	27 kDa
SPECIES REACTIVITY:	Human, Mouse, Rat and Pig
PURIFICATION:	Protein A/G purified
FORM:	Liquid
FORMULATION:	Supplied in 10 mM PBS with 0.05% BSA & 0.05% azide
STORAGE CONDITIONS:	Shipped at 4°C. For long term storage store at -20°C in small aliquots to prevent freeze-thaw cycles
DESCRIPTION:	Recognizes a protein of 27 kDa, identified as the Bcl-X protein. This MAb shows no cross-reaction with Bcl-2 or Bax protein. Bcl-X has two isoforms, Bcl-XL (long), a 241 amino acid protein which suppresses cell death. And Bcl-XS (short), a 178 amino acid protein lacking a 63 amino acid domain which functions as a dominant inhibitor of Bcl-2. This MAb reacts with both Bcl-XS and Bcl-XL proteins.
APPLICATION:	FC: 0.5-1 µg/1X10 ⁶ cells IF: 0.5-1 µg/ml WB: 0.5-1 µg/ml IHC: 0.5-1 µg/ml for 30 minutes at RT (Staining of formalin-fixed tissues requires boiling tissue sections in 10 mM Tris with 1mM EDTA, pH 9.0, for 10-20 min followed by cooling at RT for 20 minutes)

Note: This information is only intended as a guide. The optimal dilutions must be determined by the user.



Formalin-fixed, paraffin-embedded human Hodgkin's Lymphoma stained with Bcl-x Monoclonal Antibody (2H12).

Note cytoplasmic and membrane



Western Blot of Jurkat cell lysate using Bcl-X Monoclonal Antibody

RELATED PRODUCTS:

- Anti-Bcl-2 Antibody (100/D5 + 124) (Cat. No. A1435)
- Anti-Bcl-6 Antibody (BCL6/1475) (Cat. No. A1436)
- Anti-Bcl-6 Antibody (BCL6/1527) (Cat. No. A1437)
- Anti-Bax Antibody (BAX/962) (Cat. No. A1434)
- Anti-Adipophilin Antibody (ADFP/1494) (Cat. No. A1422)
- Anti-AFP Antibody (C3) (Cat. No. A1423)
- Anti-ALDH1A1 Antibody (ALDH1A1/1381) (Cat. No. A1424)
- Anti-ALK Antibody (ALK/1503) (Cat. No. A1425)
- Anti-Alkaline Phosphatase Antibody (ALPL/597) (Cat. No. A1426)
- Anti-Alpha-1-Antitrypsin Antibody (AAT/1378) (Cat. No. A1427)

FOR RESEARCH USE ONLY! Not to be used on humans.