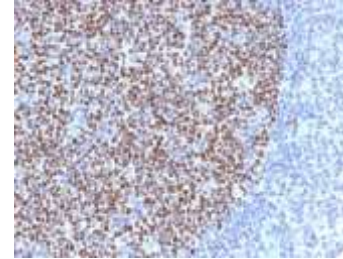


## Anti-Bcl-6 Antibody (BCL6/1527)

<b>CATALOG NO:</b>	A1437-100
<b>ALTERNATIVE NAMES:</b>	B-cell lymphoma 5 protein, B-Cell Lymphoma 6 Protein, BCL5, BCL6, BCL6A, cys his2 zinc finger transcription factor, Lymphoma Associated Zinc Finger Gene On Chromosome 3 (LAZ3), Zinc finger and BTB domain-containing protein 27 (ZBTB27), Zinc Finger Protein 51 (ZNF51), zinc finger transcription factor BCL6S
<b>AMOUNT:</b>	100 µg
<b>IMMUNOGEN:</b>	Recombinant human bcl-6 protein fragment (aa 256-389)
<b>HOST/ISOTYPE:</b>	Mouse IgG1, kappa
<b>CLONALITY:</b>	Monoclonal
<b>CLONE:</b>	BCL6/1527
<b>MOL WEIGHT:</b>	95 kDa
<b>SPECIES REACTIVITY:</b>	Human
<b>PURIFICATION:</b>	Protein A/G purified
<b>FORM:</b>	Liquid
<b>FORMULATION:</b>	Supplied in 10 mM PBS with 0.05% BSA & 0.05% azide
<b>STORAGE CONDITIONS:</b>	Shipped at 4°C. For long term storage store at -20°C in small aliquots to prevent freeze-thaw cycles
<b>DESCRIPTION:</b>	Recognizes a protein of 95 kDa, which is identified as Bcl-6. Antibody to bcl-6 is helpful in a number of diagnostic settings: (1) In the differential diagnosis of small B-cell lymphoma. Follicular lymphoma will show bcl-6 (and CD10) positivity whereas other small B-cell lymphomas are usually negative. (2) Bcl-6 is an important prognostic marker in diffuse large B-cell lymphomas (DLBCL), where CD10, bcl-6 and MUM1/IRF4 are used to identify germinal center and activated B-cell phenotypes. (3) Bcl-6 can be valuable in distinguishing classical Hodgkin lymphoma from nodular lymphocyte predominant Hodgkin lymphoma (NLPHL). The Reed-Sternberg cells of classical Hodgkin lymphoma are bcl-6 negative whereas the large (L&H) cells of NLPHL are bcl-6 positive. In contrast, anti-Bcl-6 rarely stains mantle-cell lymphoma and MALT lymphoma.
<b>APPLICATION:</b>	FC: 0.5-1 µg/1X10 <sup>6</sup> cells IF: 1-2 µg/ml IHC: 1-2µg/ml for 30 minutes at RT (Staining of formalin-fixed tissues requires boiling tissue sections in 10 mM Tris with 1 mM EDTA, pH 9.0, for 10-20 min followed by cooling at RT for 20 minutes)

**Note: This information is only intended as a guide. The optimal dilutions must be determined by the user.**



Formalin-fixed, paraffin-embedded human Tonsil stained with bcl-6 Monoclonal Antibody (BCL6/1527)

### RELATED PRODUCTS:

- Anti-ACTH Antibody (SPM501) (Cat. No. A1418)
- Anti-ACTH Antibody (r57) (Cat. No. A1419)
- Anti-Adiponectin Antibody (ADPN/1370) (Cat. No. A1420)
- Anti-Adipophilin Antibody (ADFP/1365) (Cat. No. A1421)
- Anti-Adipophilin Antibody (ADFP/1494) (Cat. No. A1422)
- Anti-AFP Antibody (C3) (Cat. No. A1423)
- Anti-ALDH1A1 Antibody (ALDH1A1/1381) (Cat. No. A1424)
- Anti-ALK Antibody (ALK/1503) (Cat. No. A1425)
- Anti-Alkaline Phosphatase Antibody (ALPL/597) (Cat. No. A1426)
- Anti-Alpha-1-Antitrypsin Antibody (AAT/1378) (Cat. No. A1427)

**FOR RESEARCH USE ONLY! Not to be used on humans.**