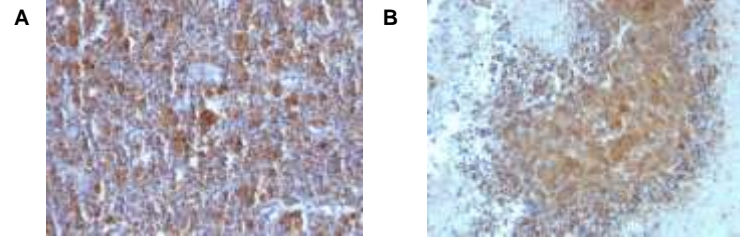


Anti-Bax Antibody (BAX/962)

CATALOG NO:	A1434-100
ALTERNATIVE NAMES:	Apoptosis regulator BAX cytoplasmic isoform beta, Apoptosis regulator BAX membrane isoform alpha, Bax isoform psi, Bax protein cytoplasmic isoform delta, Bax protein cytoplasmic isoform gamma, Bax zeta, Bcl-2-like protein 4, BCL2 associated X protein, BCL2 associated X protein omega, BCL2 associated X protein transcript variant delta2, BCL2L4
AMOUNT:	100 µg
IMMUNOGEN:	Recombinant full-length human BAX protein
HOST/ISOTYPE:	Mouse IgG1
CLONALITY:	Monoclonal
CLONE:	BAX/962
MOL WEIGHT:	21 kDa
SPECIES REACTIVITY:	Human
PURIFICATION:	Protein A/G purified
FORM:	Liquid
FORMULATION:	Supplied in 10 mM PBS with 0.05% BSA & 0.05% azide
STORAGE CONDITIONS:	Shipped at 4°C. For long term storage store at -20°C in small aliquots to prevent freeze-thaw cycles
DESCRIPTION:	Recognizes a protein of 21kDa, identified as the Bax protein. This MAb is highly specific to Bax and shows no cross-reaction with Bcl-2 or Bcl-X protein. Bcl-2 blocks cell death following a variety of stimuli. Bax has extensive amino acid homology with Bcl-2 and it homodimerizes and forms heterodimers with Bcl-2. Overexpression of Bax accelerates apoptotic death induced by cytokine deprivation in an IL-3 dependent cell line, and Bax also counters the death repressor activity of Bcl-2.
APPLICATION:	FC: 0.5-1 ug/1X10 ⁶ cells IF: 1-2 ug/ml WB: 0.5-1ug/ml IHC: 0.5-1 ug/ml for 30 minutes at RT (Staining of formalin-fixed tissues requires boiling tissue sections in 10mM Tris with 1mM EDTA, pH 9.0, for 10-20 min followed by cooling at RT for 20 minutes)
	Note: This information is only intended as a guide. The optimal dilutions must be determined by the user.



A. Formalin-fixed, paraffin-embedded Hodgkin's lymphoma stained with Bax Monoclonal Antibody (BAX/962)

B. Formalin-fixed, paraffin-embedded human melanoma stained with Bax Monoclonal Antibody (BAX/962)

RELATED PRODUCTS:

- Anti-ACTH Antibody (SPM501) (Cat. No. A1418)
- Anti-ACTH Antibody (r57) (Cat. No. A1419)
- Anti-Adiponectin Antibody (ADPN/1370) (Cat. No. A1420)
- Anti-Adipophilin Antibody (ADFP/1365) (Cat. No. A1421)
- Anti-Adipophilin Antibody (ADFP/1494) (Cat. No. A1422)
- Anti-AFP Antibody (C3) (Cat. No. A1423)
- Anti-ALDH1A1 Antibody (ALDH1A1/1381) (Cat. No. A1424)
- Anti-ALK Antibody (ALK/1503) (Cat. No. A1425)
- Anti-Alkaline Phosphatase Antibody (ALPL/597) (Cat. No. A1426)
- Anti-Alpha-1-Antitrypsin Antibody (AAT/1378) (Cat. No. A1427)

FOR RESEARCH USE ONLY! Not to be used on humans.