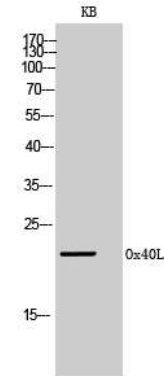


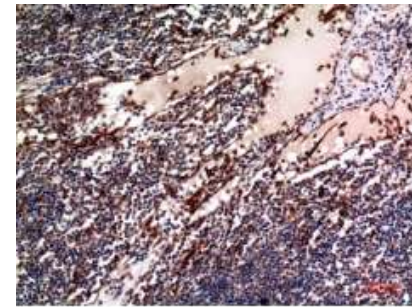
## Anti-OX40L Antibody

<b>CATALOG NO:</b>	A1389-100    100 µl
<b>ALTERNATE NAMES:</b>	Tumor necrosis factor ligand superfamily member 4, Glycoprotein Gp34, OX40 ligand, OX40L, TAX transcriptionally-activated glycoprotein 1, CD252
<b>AMOUNT:</b>	100 µl
<b>IMMUNOGEN:</b>	Synthesized peptide derived from the Internal region of human Ox40L (31-80aa)
<b>MOL. WEIGHT</b>	21 kDa
<b>HOST/ISOTYPE:</b>	Rabbit IgG
<b>SPECIES REACTIVITY:</b>	Human
<b>SPECIFICITY:</b>	OX40L Polyclonal Antibody detects endogenous levels of Ox40L protein.
<b>PURIFICATION:</b>	The antibody was affinity-purified from rabbit serum by affinity-chromatography using specific immunogen.
<b>FORM:</b>	Liquid
<b>FORMULATION:</b>	PBS containing 50% glycerol, 0.5% BSA and 0.02% sodium azide
<b>STORAGE CONDITIONS:</b>	Store at -20°C. Avoid repeated freeze/thaw cycles.
<b>DESCRIPTION:</b>	Cytokine that binds to TNFRSF4. Co-stimulates T-cell proliferation and cytokine production
<b>APPLICATION:</b>	WB 1:500-1:2000 IHC 1:100-1:300 ELISA 1:10000

**Note: This information is only intended as a guide. The optimal dilutions must be determined by the user.**



**Western Blot (WB) analysis of KB cells using Ox40L Polyclonal Antibody.**



**Immunohistochemistry (IHC) analysis of paraffin-embedded Human Lymph, antibody was diluted at 1:100.**

### RELATED PRODUCTS:

- OX40 Antibody (Cat. No. 3890-100)
- OX40 Ligand / TNFSF4 (Human) ELISA Kit (Cat. No. K4174-100)
- OX40/CD134 (Human) ELISA Kit (Cat. No. K4173-100)
- Human CellExp™ TNFRSF4/OX40 /CD134, human recombinant (Cat. No. 7438)

**FOR RESEARCH USE ONLY! Not to be used on humans.**