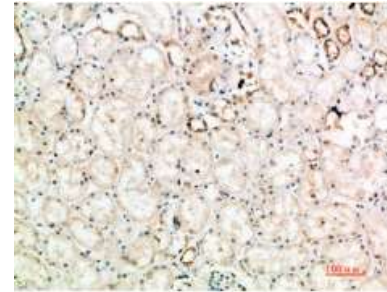


Anti-CD152 Antibody

CATALOG NO:	A1388-100 100 µl
ALTERNATE NAMES:	Cytotoxic T-lymphocyte protein 4, Cytotoxic T-lymphocyte-associated antigen 4, CTLA-4, CD152, CTLA4
AMOUNT:	100 µl
IMMUNOGEN:	Synthetic peptide from human protein at AA range: 41-90
HOST/ISOTYPE:	Rabbit IgG
SPECIES REACTIVITY:	Human
SPECIFICITY:	The antibody detects endogenous CD152
PURIFICATION:	The antibody was affinity-purified from rabbit antiserum by affinity-chromatography using epitope-specific immunogen
FORM:	Liquid
FORMULATION:	In PBS, pH 7.4, containing 0.02% sodium azide as Preservative and 50% Glycerol
STORAGE CONDITIONS:	Store at -20°C. Avoid repeated freeze/thaw cycles.
DESCRIPTION:	Inhibitory receptor acting as a major negative regulator of T-cell responses. The affinity of CTLA4 for its natural B7 family ligands, CD80 and CD86, is considerably stronger than the affinity of their cognate stimulatory coreceptor CD28.
APPLICATION:	IHC-P 1:50-300 ELISA 1:5000-20000
	Note: This information is only intended as a guide. The optimal dilutions must be determined by the user.



Immunohistochemical analysis of paraffin-embedded human-kidney, antibody was diluted at 1:200.



Immunohistochemical analysis of paraffin-embedded human-brain, antibody was diluted at 1:200.

RELATED PRODUCTS:

- CD223 (LAG3) Polyclonal Antibody (Cat. No. A1067-100)
- CD86 Polyclonal Antibody (Cat. No. A1068-100)
- Tim-3 Antibody (Cat. No. 3808-100)
- CD160 Polyclonal Antibody (Cat. No. A1072-100)

FOR RESEARCH USE ONLY! Not to be used on humans.