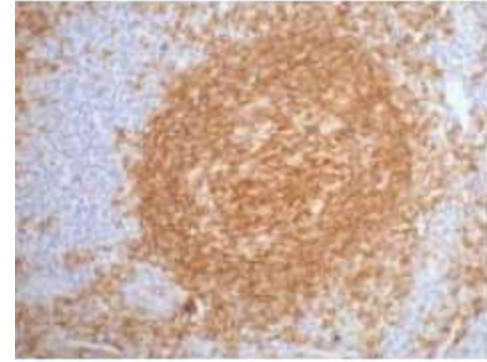


Anti-CD20 Antibody (2F4)

CATALOG NO:	A1385-100 100 µl
ALTERNATE NAMES:	B-lymphocyte antigen CD20, B-lymphocyte surface antigen B1, Bp35, Leukocyte surface antigen Leu-16, Membrane-spanning 4-domains subfamily A member 1
AMOUNT:	100 µl
CLONALITY:	Monoclonal
CLONE:	2F4
IMMUNOGEN:	Synthesized peptide
HOST/ISOTYPE:	Mouse IgG1
SPECIES REACTIVITY:	Human, Mouse, Rat
SPECIFICITY:	The antibody detects endogenous CD20 proteins.
PURIFICATION:	The antibody was affinity-purified from mouse ascites by affinity-chromatography using specific immunogen.
FORM:	Liquid
FORMULATION:	PBS containing 50% glycerol, 0.5% BSA and 0.02% sodium azide
STORAGE CONDITIONS:	Store at -20°C. Avoid repeated freeze/thaw cycles.
DESCRIPTION:	This protein may be involved in the regulation of B-cell activation and proliferation.
APPLICATION:	IHC 1:200

Note: This information is only intended as a guide. The optimal dilutions must be determined by the user.



Immunohistochemistry (IHC) staining of Human Tonsil tissue paraffin-embedded, diluted at 1:200.

RELATED PRODUCTS:

- Anti-CD20 (Rituximab), Chimeric Antibody (**Cat. No. A1049**)
- Human CellExp™ CD200/OX-2, human recombinant (**Cat. No. 7384**)

FOR RESEARCH USE ONLY! Not to be used on humans.