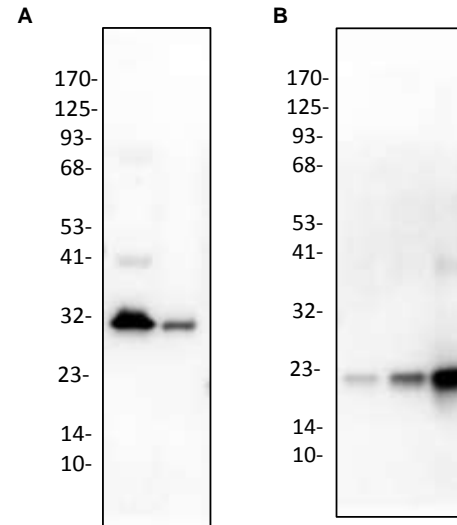


## Anti-PD-1 Antibody

<b>CATALOG NO:</b>	A1384-30T 30 µg (Trial size) A1384-100 100 µg
<b>ALTERNATIVE NAMES:</b>	PDCD1, PD1, CD279, SLEB2, hPD-1, hPD-I
<b>CONCENTRATION:</b>	0.5 mg/ml
<b>IMMUNOGEN:</b>	Human recombinant PD-1 (Cat. No. P1024)
<b>INTERNAL ID:</b>	BV-Q73
<b>HOST/ISOTYPE:</b>	Rabbit IgG
<b>PURIFICATION:</b>	Affinity purified rabbit IgG
<b>FORM:</b>	Liquid
<b>FORMULATION:</b>	In PBS pH 7.2, containing 30% glycerol, 0.5% BSA, 5 mM EDTA and 0.03% proclin
<b>SPECIES REACTIVITY:</b>	Human, Mouse and Rat
<b>STORAGE CONDITIONS:</b>	Store at -20°C. Avoid repeated freeze/thaw cycles.
<b>DESCRIPTION:</b>	Programmed death protein 1 (PD-1) is also known as CD279 and PDCD1, is a type I membrane protein and is a member of the extended CD28/CTLA-4 family of T cell regulators. PDCD1 is expressed on the surface of activated T cells, B cells, macrophages, myeloid cells and a subset of thymocytes. PD-1 has two ligands, PD-L1 and PD-L2, which are members of the B7 family. PD-L1 is expressed on almost all murine tumor cell lines, including PA1 myeloma, P815 mastocytoma, and B16 melanoma upon treatment with IFN-γ. PD-L2 expression is more restricted and is expressed mainly by DCs and a few tumor lines. PD1 inhibits the T-cell proliferation and production of related cytokines including IL-1, IL-4, IL-10 and IFN-γ by suppressing the activation and transduction of PI3K/AKT pathway. In addition, coligation of PD1 inhibits BCR-mediated signal by dephosphorylating key signal transducer. In vitro, treatment of anti-CD3 stimulated T cells with PD-L1-Ig results in reduced T cell proliferation and IFN-γ secretion. Monoclonal antibodies targeting PD-1 that boost the immune system are being developed for the treatment of cancer.
<b>APPLICATION:</b>	Western blot: 1-4 µg

**Note:** This information is only intended as a guide. The optimal dilutions must be determined by the user.



### Western blot analysis of PD-1 antibody in:

**Fig A:** (1) Mouse heart lysate (2) Rat kidney lysate

**Fig B:** Human recombinant PD-1 (1) 2 ng (2) 10 ng (3) 50 ng

### RELATED PRODUCTS:

- PD-1 (human) ELISA Kit (**Cat. No. K4153**)
- PD-1/PD-L1 Inhibitor 2 (**Cat. No. B1050**)
- Human CellExp™ Biotinylated PD-1 / PDCD1, His Tag & Fc Tag, human recombinant (**Cat. No. 7877**)
- Human CellExp™ PD-1 /PDCD1, C-Fc Tag, human recombinant (**Cat. No. 7500**)
- Human CellExp™ PD-1 /PDCD1, human recombinant (**Cat. No. 7498**)

**FOR RESEARCH USE ONLY! Not to be used on humans.**