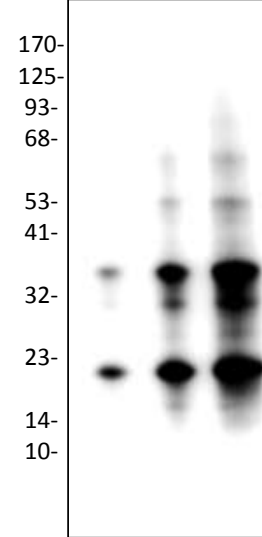


## Anti-MART-1/Melan-A Antibody

<b>CATALOG NO:</b>	A1344-30T 30 µg (Trial size) A1344-100 100 µg
<b>ALTERNATIVE NAMES:</b>	Melanoma antigen recognized by T-cells 1, Antigen LB39-AA, Antigen SK29-AA, MART-1, Melan-A
<b>CONCENTRATION:</b>	0.5 mg/ml
<b>IMMUNOGEN:</b>	Recombinant mouse MART-1 protein (Cat. No. 4824)
<b>INTERNAL ID:</b>	BV-P58
<b>HOST/ISOTYPE:</b>	Rabbit IgG
<b>PURIFICATION:</b>	Affinity purified rabbit IgG
<b>FORM:</b>	Liquid
<b>SPECIES REACTIVITY:</b>	Mouse
<b>FORMULATION:</b>	In PBS pH 7.2, containing 30% glycerol, 0.5% BSA, 5 mM EDTA and 0.03% proclin
<b>STORAGE CONDITIONS:</b>	Store at -20°C. Avoid repeated freeze/thaw cycles.
<b>DESCRIPTION:</b>	MART-1 (also known as Melan-A) is a melanocyte differentiation antigen or marker recognized by autologous cytotoxic T lymphocytes. It is a membrane protein with one transmembrane peptide. Melan-A is expressed by a large proportion of melanoma tumors, both melanotic and amelanotic and by melanoma cell lines. It is present in melanocytes of normal skin and retina, nevi and in more than 85% of melanomas. Melan-A/MART-1 is not expressed by non-melanoma malignancies. It is recognized by autologous cytotoxic T lymphocytes. Subcellular fractionation shows that MART-1 is present in melanosomes and endoplasmic reticulum. Six other melanoma associated antigens recognized by autologous cytotoxic T cells include MAGE-1, Tyrosinase, gp100, gp75, BAGE-1, and GAGE-1.
<b>APPLICATION:</b>	Western blot: 1-4 µg

**Note:** This information is only intended as a guide. The optimal dilutions must be determined by the user.



**Western blot analysis of MART-1 antibody in:**

Lane 1: Rec. mouse MART-1 2 ng  
Lane 2: Rec. mouse MART-1 10 ng  
Lane 3: Rec. mouse MART-1 50 ng

### RELATED PRODUCTS:

- MART-1/Melan-A, human recombinant (**Cat. No. 4823**)
- MART-1/Melan-A, mouse recombinant (**Cat. No. 4824**)
- MART-1/Melan-A Antibody (**Cat. No. 5823**)

**FOR RESEARCH USE ONLY! Not to be used on humans.**