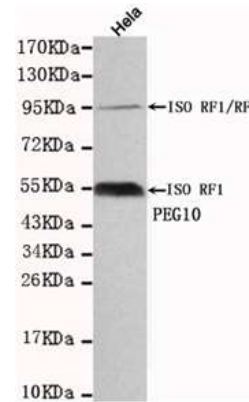


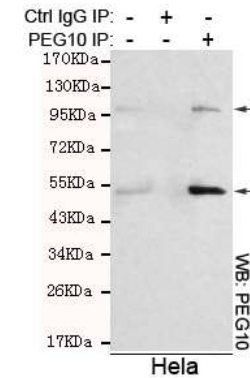
Anti-PEG10 Antibody (1E2-F12-C12)

CATALOG NO:	A1321-100
AMOUNT:	100 µg
ALTERNATIVE NAMES:	Retrotransposon-derived protein PEG10, Embryonal carcinoma differentiation-regulated protein, Mammalian retrotransposon-derived protein 2, Myelin expression factor 3-like protein 1, MEF3-like protein 1
CLONALITY:	Monoclonal
CLONE:	1E2-F12-C12
Host/ISOTYPE:	Mouse IgG1
IMMUNOGEN:	Recombinant human PEG10 protein fragments expressed in <i>E.coli</i>
MOLECULAR WEIGHT:	55 kDa
SPECIES REACTIVITY:	Human
SPECIFICITY:	This antibody detects endogenous levels of PEG10 and does not cross-react with related proteins.
PURIFICATION:	Affinity purified
FORM:	Liquid
FORMULATION:	Purified mouse monoclonal in buffer containing 0.1M Tris-Glycine (pH 7.4, 150 mM NaCl) with 0.2% sodium azide, 50% glycerol
STORAGE CONDITIONS:	For long term storage store at -20°C in small aliquots to prevent freeze-thaw cycles
DESCRIPTION:	Prevents apoptosis in hepatocellular carcinoma (HCC) cells through interaction with SIAH1, a mediator of apoptosis. May also have a role in cell growth promotion and hepatoma formation. Inhibits the TGF-beta signaling by interacting with the TGF-beta receptor ALK1. When overexpressed, induces the formation of cellular extension, such as filipodia in association with ALK1. Involved at the immediate early stage of adipocyte differentiation (By similarity). May bind to the 5'-GCCTGTCTTT-3' DNA sequence of the MB1 domain in the myelin basic protein (MBP) promoter.
APPLICATION:	WB; 1:1000 IP

Note: This information is only intended as a guide. The optimal dilutions must be determined by the user.



Western blot detection of PEG10 in HeLa cell lysates using PEG10 Antibody



Immunoprecipitation analysis of HeLa cell lysates using PEG10 Antibody

RELATED PRODUCTS:

- 5-hmC polyclonal antibody (rabbit) (Cat. No. 6830)
- Acetyl Lysine (Biotin) Antibody (Cat. No. 6125)
- Acetyl-Histone H2A Antibody (Cat. No. 3653)
- Anti- c-Myb Antibody (Cat. No. A1212)

FOR RESEARCH USE ONLY! Not to be used on humans.