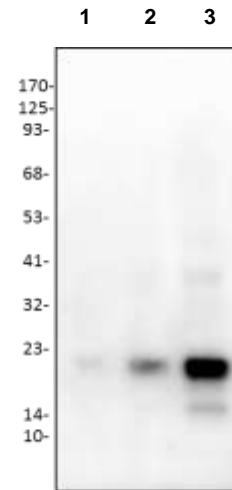


## Anti-PLGF-2 Antibody

<b>CATALOG NO:</b>	A1303-30T     30 µg (Trial size) A1303-100     100 µg
<b>ALTERNATIVE NAMES:</b>	Placenta growth factor, PIGF, PGF, PGFL, PLGF
<b>CONCENTRATION:</b>	0.5 mg/ml
<b>IMMUNOGEN:</b>	Recombinant human PLGF-2
<b>INTERNAL ID:</b>	BV-Q58
<b>HOST/ISOTYPE:</b>	Rabbit IgG
<b>PURIFICATION:</b>	Affinity purified rabbit IgG
<b>FORM:</b>	Liquid
<b>SPECIES REACTIVITY:</b>	Human
<b>FORMULATION:</b>	In PBS pH 7.2, containing 30% glycerol, 0.5% BSA, 5 mM EDTA and 0.03% proclin
<b>STORAGE CONDITIONS:</b>	Store at -20°C. Avoid repeated freeze/thaw cycles.
<b>DESCRIPTION:</b>	Growth factor active in angiogenesis and endothelial cell growth, stimulating their proliferation and migration. It binds to the receptor FLT1/VEGFR-1. Isoform PIGF-2 binds NRP1/neuropilin-1 and NRP2/neuropilin-2 in a heparin-dependent manner. Also promotes cell tumor growth.
<b>APPLICATION:</b>	Western blot: 1-4 µg
	<b>Note: This information is only intended as a guide. The optimal dilutions must be determined by the user.</b>



**Western blot of human PLGF-2 antibody:**

Lane 1: human PLGF-2 10 ng  
Lane 2: human PLGF-2 50 ng  
Lane 3: human PLGF-2 200 ng

**RELATED PRODUCTS:**

- PLGF-2, human recombinant (**Cat. No. 4741**)
- Human CellExp™ PLGF/PIGF2/PGF, human recombinant (**Cat. No. 7238**)

**FOR RESEARCH USE ONLY! Not to be used on humans.**