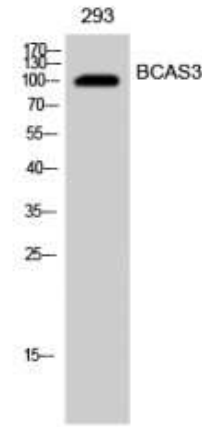


Anti-BCAS3 Antibody

CATALOG NO:	A1292-100 100 µl
ALTERNATE NAMES:	Breast carcinoma-amplified sequence 3, GAOB1
AMOUNT:	100 µl
IMMUNOGEN:	Synthesized peptide derived from the Internal region of human BCAS3 at AA range (660-740 aa)
MOL. WEIGHT	~100 kDa
HOST/ISOTYPE:	Rabbit IgG
SPECIES REACTIVITY:	Human, Mouse
SPECIFICITY:	BCAS3 Polyclonal Antibody detects endogenous levels of BCAS3 protein.
PURIFICATION:	The antibody was affinity-purified from rabbit serum by affinity-chromatography using specific immunogen.
FORM:	Liquid
FORMULATION:	PBS containing 50% glycerol, 0.5% BSA and 0.02% sodium azide
STORAGE CONDITIONS:	Store at -20°C. Avoid repeated freeze/thaw cycles.
DESCRIPTION:	Plays a role in angiogenesis. Participates in the regulation of cell polarity and directional endothelial cell migration by mediating both the activation and recruitment of CDC42 and the reorganization of the actin cytoskeleton at the cell leading edge. Promotes filipodia formation (By similarity). Functions synergistically with PELP1 as a transcriptional coactivator of estrogen receptor-responsive genes. Stimulates histone acetyltransferase activity. Binds to chromatin
APPLICATION:	WB 1:500-1:2000 ELISA 1:5000

Note: This information is only intended as a guide. The optimal dilutions must be determined by the user.



Western Blot analysis of 293 cells using BCAS3 Polyclonal Antibody.

RELATED PRODUCTS:

- SCF Antibody (Cat. No. 5328)
- TGF-alpha Antibody (Cat. No. 5339)
- VEGF Antibody (Cat. No. 5363)
- BMP-14 Antibody (Cat. No. 5580)
- OCT4 (OCT3) Antibody (Cat. No. 6765)
- Survivin Antibody (Cat. No. 3160)
- IFN gamma Antibody (Cat. No. 5117)

FOR RESEARCH USE ONLY! Not to be used on humans.