

Anti-CEACAM1 Antibody

CATALOG NO:	A1291-100
ALTERNATIVE NAMES:	Carcinoembryonic Antigen Related Cell Adhesion Molecule 1, CD66a Antigen, BGP1, BGP, Biliary Glycoprotein 1, Antigen CD66
AMOUNT:	100 µg
IMMUNOGEN:	A1/B-domains of CEACAM1
MOLECULAR WEIGHT:	90 kDa
HOST/ISOTYPE:	Mouse IgG1 kappa
CLONE:	B3-17
SPECIES REACTIVITY:	Human
SPECIFICITY:	No cross reactivity with mouse and rat CEACAM
FORM:	Liquid
STORAGE CONDITIONS:	For long term storage store at -20°C in small aliquots to prevent freeze-thaw cycles
DESCRIPTION:	Carcinoembryonic antigen related cell adhesion molecules (CEACAM) (CD66a) belong to the immunoglobulin superfamily. They are highly glycosylated proteins with the typical N-terminal variable Ig-like domain followed by 0-6 constant Ig-like domains. A hydrophobic transmembrane domain with a cytoplasmic tail anchors CEACAM1 to the cell membrane. CEACAM1 is known as an epithelial tumour suppressor and an angiogenic growth factor.
APPLICATION:	Western Blot: 10 µg; ELISA: 3 µg, IHC: 10 µg, IF: 10 µg
	Note: This information is only intended as a guide. The optimal dilutions must be determined by the user.

A

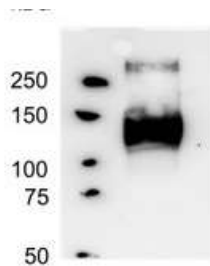
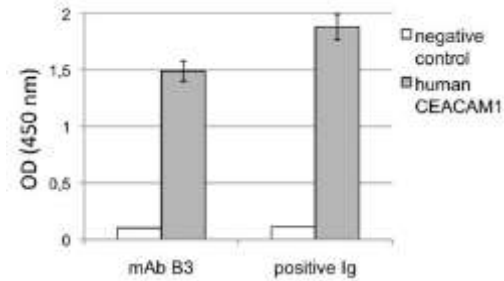


Fig A. Western blot analysis using CEACAM1 Monoclonal Antibody at 10 µg/ml

B



C



D

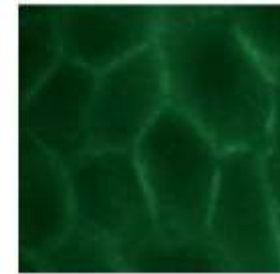


Fig B. Sandwich ELISA: solid phase was coated with 3 µg/ml Anti-CEA binding human CEACAM1-CEACAM8. After washing, blocking and coating human CEACAM1 antigen, detecting antibody Anti-CEACAM1 (10 µg/ml) followed by HRP-coupled goat anti-mouse Ig was added.

Fig C. IHC: IHC of human jejunum using Anti-CEACAM1 (10 µg/ml) developed with DAB-staining procedure. Dark line indicated by arrows shows CEACAM1 expression.

Fig D. IF: Fluorescence microscopy applying Anti-CEACAM1 (10 µg/ml) for the staining of HT29 cells.

RELATED PRODUCTS

- Human CellExp™ CEACAM6/CD66c, human recombinant (Cat. No. 7837-10, -50)
- Anti-CEACAM1 Antibody (Cat. No. A1290-100)

FOR RESEARCH USE ONLY! Not to be used on humans.