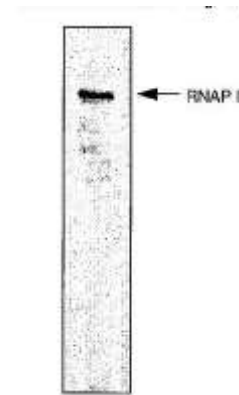


Anti-RNA polymerase II Antibody (CTD 4H8)

CATALOG NO:	A1289-100
AMOUNT:	100 µl
IMMUNOGEN:	10 repeats of synthetic peptide YSPTSPS using chemically synthesized phospho-Ser5
HOST/ISOTYPE:	Mouse IgG1
CLONE:	CTD 4H8
SPECIES REACTIVITY:	Human, Yeast, Mouse
SPECIFICITY:	Specific for C-terminal repeat of large subunit of RNA polymerase II. This antibody detects both unphosphorylated and phosphorylated forms of the protein.
FORM:	Liquid
STORAGE CONDITIONS:	For long term storage store at -20°C in small aliquots to prevent freeze-thaw cycles
DESCRIPTION:	RNAPII is an essential component of the RNAP II transcription elongation complex. Recruitment of RNA processing factors to the elongation complex is coordinated by the phosphorylation of Serine-2 and Serine-5 residues within the C-terminal repeat (YSPTSPS) domain of the largest subunit of RNAPII. Mutations that directly affect transcription by RNA polymerases rank among the most central mediators of malignant transformation.
APPLICATION:	ChIP, ELISA, FACS, IHC, IF, IP, ChIP-seq WB: 1:1000

Note: This information is only intended as a guide. The optimal dilutions must be determined by the user.



Western Blot detection of HeLa cell line using Anti-RNA polII antibody

RELATED PRODUCTS

- SRA Antibody (Cat. No. 3780)
- NONO Antibody (Cat. No. 3751)
- Caper Antibody (Cat. No. 3733)
- Dicer Antibody (Cat. No. 3697)

FOR RESEARCH USE ONLY! Not to be used on humans.