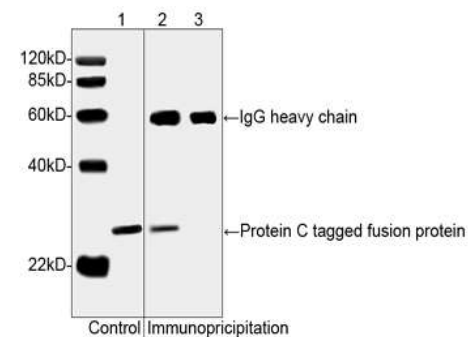


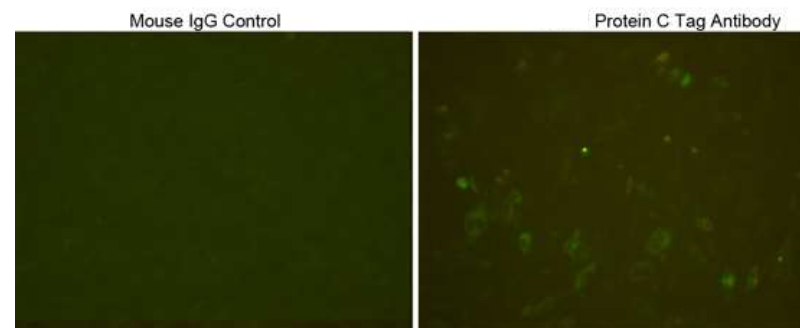
Anti-Protein C Tag Antibody

CATALOG NO:	A1287-50
AMOUNT:	50 µg
IMMUNOGEN:	Protein C tag peptide conjugated to KLH
CLONE:	2H12F4
HOST/ISOTYPE:	Mouse IgG1, κ
PURIFICATION:	Protein A purification
FORM:	Liquid
FORMULATION:	PBS, pH 7.4, containing 0.02% sodium azide
SPECIFICITY:	Protein C Tag Antibody, Mouse recognizes N-terminal and C-terminal Protein C tagged fusion proteins.
STORAGE CONDITIONS:	Store at 2-8°C for 2-3 weeks. For long term storage, aliquot and store at -20°C or below. Avoid repeated freezing and thawing cycles.
DESCRIPTION:	Protein C is a Vitamin K-dependent plasma zymogen that is activated by proteolytic cleavage of the thrombin-thrombomodulin complex to form an anticoagulant enzyme. Protein C Tag is a 12 amino acid sequence EDQVDPRLIDGK, which encodes residues 6 through 17 of the heavy chain of the protein. Protein C Tag Antibody is a useful tool in analysis of Protein C fusion proteins. Protein C (HPC4) Tag Antibody, is produced from the hybridoma resulting from fusion of SP2/0-Ag14 myeloma and B-lymphocytes obtained from mouse immunized with Protein C tag peptide conjugated to KLH.
APPLICATION:	WB: 0.1-0.5 µg/ml IP: 1-5 µg/ml FC: 1-3 µg for 1 x 10 ⁶ cells ICC/IF: 1-3 µg/ml ELISA: 0.001-0.002 µg/ml.

Note: This information is only intended as a guide. The optimal dilutions must be determined by the user.



Western blot analysis of immunoprecipitates from Protein C tagged protein transfected CHO cell lysates. Lane 1: Protein C tagged protein transfected CHO cell lysates as input control. Lane 2: Immunoprecipitates of the Protein C tagged protein transfected CHO cell lysates with Protein C Tag Antibody. Lane 3: Immunoprecipitates of the Protein C tagged protein transfected CHO cell lysates with Mouse IgG Control



ICC/IF analysis of Protein C tagged protein transfected CHO cells using Protein C Tag Antibody and Mouse IgG Control

RELATED PRODUCTS:

- cAMP Antibody (Cat. No. 3567)
- cGMP Direct Immunoassay Kit (Colorimetric) (Cat. No. K372)
- 8-Br-cGMP (Cat. No. 1838)
- His-Tag Antibody (Clone 11E12) (Cat. No. 6714-100)
- His-Tag Antibody (Clone BV-G020) (Cat. No. 3646-100)

FOR RESEARCH USE ONLY! Not to be used on humans.