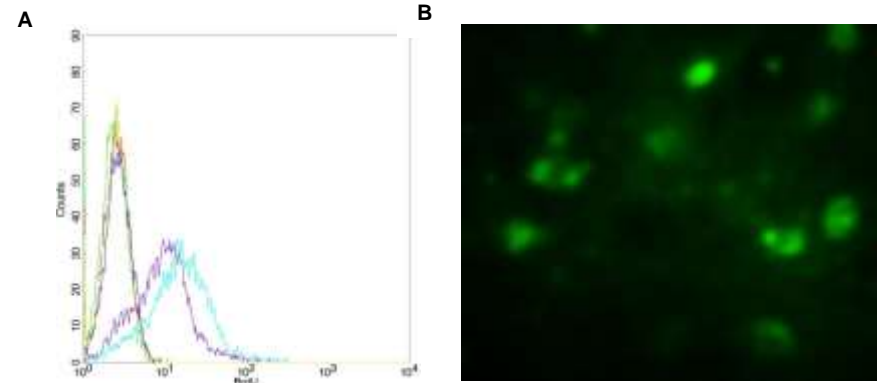


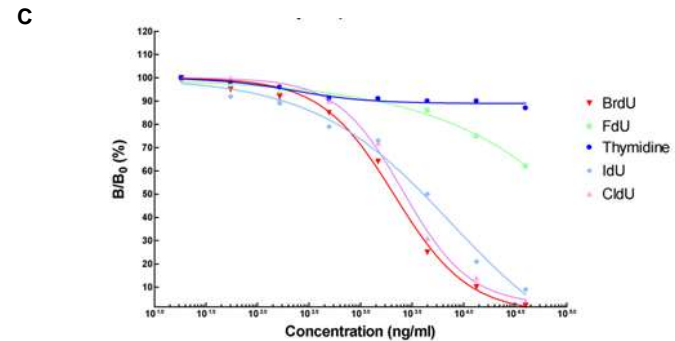
## Anti-BrdU Antibody

<b>CATALOG NO:</b>	A1284-100
<b>AMOUNT:</b>	100 µg
<b>IMMUNOGEN:</b>	BrdU conjugated to KLH
<b>CLONE:</b>	3E2D3
<b>HOST/ISOTYPE:</b>	Mouse IgG1 κ
<b>PURIFICATION:</b>	Protein A purification
<b>FORM:</b>	Liquid
<b>FORMULATION:</b>	PBS, pH 7.4 containing 0.02% sodium azide
<b>SPECIFICITY:</b>	The specificity of the antibody has been tested by competitive ELISA. Binding was inhibited by 5-bromo-2'-deoxyuridine (BrdU), 5-chloro-2'-deoxyuridine (CldU) and 5-iodo-2'-deoxyuridine (IdU). No cross-reactivity was observed with 5-fluoro-2'-deoxyuridine (FdU) and thymidine (T).
<b>STORAGE CONDITIONS:</b>	Store at 2-8°C for 2-3 weeks. For long term storage, aliquot and store at -20°C or below. Avoid repeated freezing and thawing cycles.
<b>DESCRIPTION:</b>	Bromodeoxyuridine (5-Bromo-2-Deoxyuridine, BrdU) is an analogue of thymidine that can be incorporated into newly synthesized DNA at the S phase of the cell cycle, thus BrdU is a common reagent used for both cell proliferation assays and for the detection of apoptotic cells. The amount of BrdU incorporated into the DNA is dependent on time exposed to BrdU and the rate of cell division. Detection of incorporated BrdU is useful to determine cell cycle kinetics, assessing cell proliferation in the presence of growth factors or cytotoxic drugs and demonstrating sister chromatid exchange. BrdU monoclonal antibody, is produced from the hybridoma resulting from fusion of Sp2/0 myeloma and lymphocytes obtained from mouse immunized with BrdU conjugated to KLH.
<b>APPLICATION:</b>	ELISA: 0.015- 0.05 µg/ml Flow cytometry: 1-3 µg for 1 x 10 <sup>6</sup> cells ICC/IF: 1-3 µg/ml
	<b>Note: This information is only intended as a guide. The optimal dilutions must be determined by the user.</b>



**Fig.A.** Flow cytometric analysis of untreated or BrdU incorporated HeLa cells using BrdU Antibody (yellow and cyan, respectively), Competitor A Mouse Anti-BrdU mAb (blue and purple, respectively), or mouse IgG1 isotype control (green and red, respectively).

**Fig. B.** Immunocytochemistry/Immunofluorescence analysis of HeLa cells incorporated with BrdU using BrdU monoclonal antibody



**Fig. C.** Competitive ELISA analysis of Cross Reactivity using BrdU Antibody

### RELATED PRODUCTS

- BrdU Cell Proliferation Assay Kit (Cat. No. K306)
- Anti-HA Tag (FITC) Antibody (Cat. No. A1281-50)
- Anti-HA Tag (Biotin) Antibody (Cat. No. A1282-50)
- His-Tag Antibody (Clone 11E12) (Cat. No. 6714-100)
- His-Tag Antibody (Clone BV-G020) (Cat. No. 3646-100)

**FOR RESEARCH USE ONLY! Not to be used on humans.**