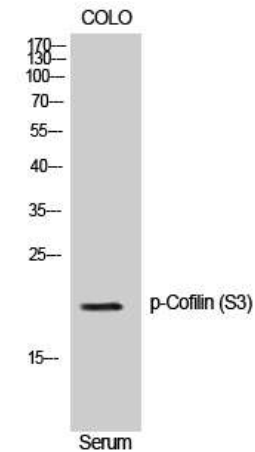


Phospho-Cofilin (Ser3) Antibody

CATALOG NO:	A1267-100 100 µl
ALTERNATE NAMES:	Cofilin-1, 18 kDa phosphoprotein, p18, Cofilin, non-muscle isoform, CFL1, CFL
AMOUNT:	100 µl
IMMUNOGEN:	Synthesized peptide derived from human Cofilin around the phosphorylation site of S3. AA: 10-90
MOL. WEIGHT	19 kDa
HOST/ISOTYPE:	Rabbit IgG
SPECIES REACTIVITY:	Human, Mouse, Rat
SPECIFICITY:	Phospho-Cofilin (S3) Polyclonal Antibody detects endogenous levels of Cofilin protein only when phosphorylated at S3.
PURIFICATION:	The antibody was affinity-purified from rabbit serum by affinity-chromatography using specific immunogen.
FORM:	Liquid
FORMULATION:	PBS containing 50% glycerol, 0.5% BSA and 0.02% sodium azide
STORAGE CONDITIONS:	Store at -20°C. Avoid repeated freeze/thaw cycles.
DESCRIPTION:	Binds to F-actin and exhibits pH-sensitive F-actin depolymerizing activity. Regulates actin cytoskeleton dynamics. Important for normal progress through mitosis and normal cytokinesis. Plays a role in the regulation of cell morphology and cytoskeletal organization. Required for the up-regulation of atypical chemokine receptor ACKR2 from endosomal compartment to cell membrane, increasing its efficiency in chemokine uptake and degradation. Required for neural tube morphogenesis and neural crest cell migration.
APPLICATION:	WB 1:500-1:2000 IHC 1:100-1:300 ELISA 1:10000
	Note: This information is only intended as a guide. The optimal dilutions must be determined by the user.



Western Blot analysis of COLO205 cells using Phospho-Cofilin (S3) Polyclonal Antibody.

RELATED PRODUCTS:

- Phospho Alpha-synuclein (Tyr125) Antibody (**Cat. No. A1219-100**)
- Phospho (Ser31) Tyrosine Hydroxylase Antibody (**Cat. No. 3613-200**)
- Phospho (Ser19) Tyrosine Hydroxylase Antibody (**Cat. No. 3612-100**)
- Phospho (Tyr1472) NMDA NR2B Antibody (**Cat. No. 3616-100**)
- Phospho CREB (Ser129) Antibody (**Cat. No. A1222-100**)
- Phospho GAP43 (Ser41) Antibody (**Cat. No. A1220-100**)
- Phospho-Akt2 (Ser474) Antibody (**Cat. No. A1246-100**)
- Phospho-Akt1 (Ser246) Antibody (**Cat. No. A1245-100**)
- Phospho-MNK1 (Thr250) Antibody (**Cat. No. A1159-50**)
- Phospho-NIFK (Thr234) Antibody (**Cat. No. A1157-50**)

FOR RESEARCH USE ONLY! Not to be used on humans.